



**London
South Bank
University**

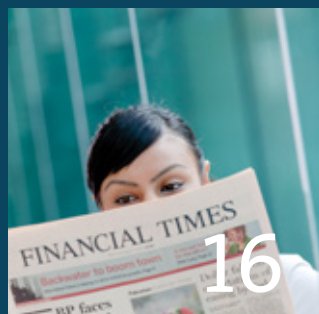
Study in the heart of London

International prospectus



Become what you want to be

Contents



2	Reasons to choose LSBU
6	London map
8	Student accommodation
10	School of Applied Sciences
12	School of Arts and Creative Industries
14	School of the Built Environment and Architecture
16	School of Business
18	School of Engineering
20	School of Health and Social Care
22	School of Law and Social Sciences

24	Preparation programmes
26	Study abroad
28	Levels of study in the UK
29	Entry requirements
30	Fees and funding
31	Scholarships
33	Visa information
35	Facilities and student support
38	Student Enterprise
39	Useful contacts



Welcome to London South Bank University, one of London's oldest and largest educational institutions.

Since 1892, we have been priding ourselves on creating professional opportunities for our students and equipping them to become highly successful in their careers.

International students play a key part in life at LSBU, with students from over 130 countries enrolled on courses at the University. This mix of students creates a rich culture of diversity on campus that is reflected in our staff as well as in the many collaborations that we have with institutions around the world.

You can feel confident in your choice to study at LSBU. All our courses are accredited or developed in partnership with relevant industries, and our academic staff is populated by professionals in their chosen field. Guest lecturers, cutting-edge work-based projects and state-of-the-art learning facilities enrich the curriculum, while our continuously evolving research activity underpins teaching and learning.

At LSBU, we place a strong emphasis on providing students with real industry experience during their studies, which is why we have integrated work placements into many of our programmes. I believe that this practical approach is one of the reasons why LSBU is currently ranked as the No 1 London Modern University for graduate starting salaries* and why our graduates have found success in a wide range of industries, from arts and media, to business, finance, law, engineering and more.

I hope you enjoy looking through our prospectus – you will find that we have a lot to offer. I wish you every success in your studies.

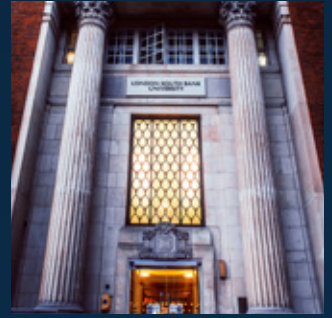
Best wishes

A handwritten signature in blue ink, appearing to read 'DAP', written in a fluid, cursive style.

Professor David Phoenix OBE

AcSS DUniv DSc FRCP(Edin) FIMA FSB FRSC SFHEA
Vice-Chancellor & Chief Executive

Reasons to choose LSBU



Central London location

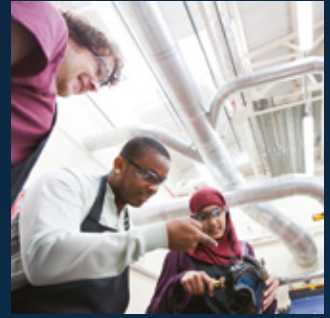
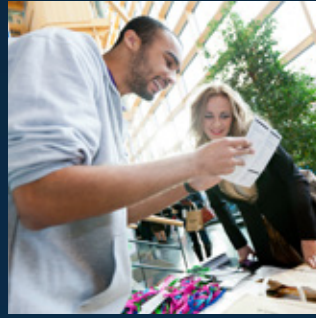
London is one of the most exciting cities in the world, and an incredible place to study. London South Bank University is based on an integrated campus just 10 minutes' walk from the city's business and cultural centres, as well as mainline rail stations Waterloo and London Bridge.

At LSBU you will be surrounded by London's history and culture, and close to its major attractions. These include the Houses of Parliament and Big Ben, the London Eye, the Royal Festival Hall, Buckingham Palace, the Tower of London, Piccadilly Circus, Tate Britain and Tate Modern. With all this on your doorstep, LSBU offers the perfect base from which to enrich your student experience.

LSBU is the number one London Modern University for graduate starting salaries

Sunday Times League Table 2016





Excellent industry partnerships

We're committed to giving our students the best opportunities and education possible. As one of our students, you'll benefit from industry leaders as guest lecturers and the chance to carry out work placements on some courses.

Our students are successful in securing coveted internships and graduate placements with market leaders, such as Goldman Sachs, KPMG and Ogilvy.

Outstanding student support and facilities

Each of our courses at LSBU is supported by excellent facilities. You'll find first-class technology and expert support whether you spend time in our research and skills laboratories, workshops, media centre, theatre, library or Learning Resources Centre. International students also benefit by having a dedicated student support team available to them from the point of offer right through to graduation.

Accredited courses

As part of our commitment to provide an industry-relevant curriculum, all our courses are accredited by or developed in partnership with the leading professional bodies. This will give you many of the maximum exemptions when pursuing your professional examinations. Our strong links with businesses ensure that our programmes keep up with the latest needs of the relevant sectors.

The Association of Chartered Certified Accountants (ACCA), the Chartered Institute of Marketing (CIM) and the Royal Institute of British Architects (RIBA) are just a few of the internationally recognised professional bodies that accredit degree programmes at LSBU. This ensures that you receive all the training, knowledge and skills you need to prepare you for your chosen career.

LSBU has the highest possible rating for the quality of our education

Quality Assurance Agency report 2010



Reasons to choose LSBU



Cutting-edge research

At LSBU, we apply our broad, diverse research to current global issues, with direct outcomes for you and the programmes you study.

Our Schools are involved in a wide range of research projects, many involving collaborations with business or public bodies, tackling some of today's most testing issues. We share our research in the classroom as case studies, because we think a collaborative, motivated atmosphere is a key factor in our students' success. We'll bring in experts as guest speakers, and lecturers use their research to help guide you in your final year projects, lending their expert knowledge to your success.

To keep our research practically focused, we offer companies and organisations all kinds of ways to access our expertise. This has been instrumental in developing global brands and products such as FitFlo, which our pioneering research in foot and ankle biomechanics helped develop, as well as improving public services, like our research into cooling the London Underground (metro) that's been incorporated into a £500 million upgrade of the system.

A top modern London university for the impact of our research

Research Excellence Framework 2014



A global community

LSBU is a truly global university with over 2000 international students from over 130 countries studying on courses at the University. Our staff reflect the international community of our student body, bringing a wealth of knowledge and experience from all over the world.

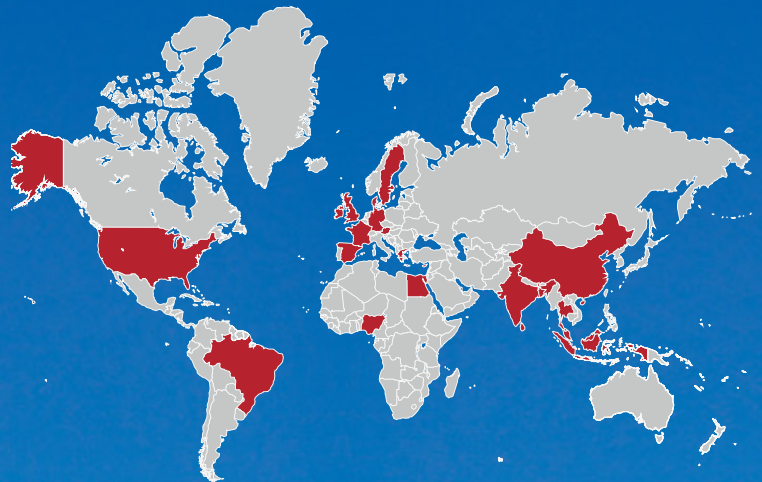
**LSBU is the number one
London Modern University
for graduate prospects**

Sunday Times League Table 2016

International collaborations

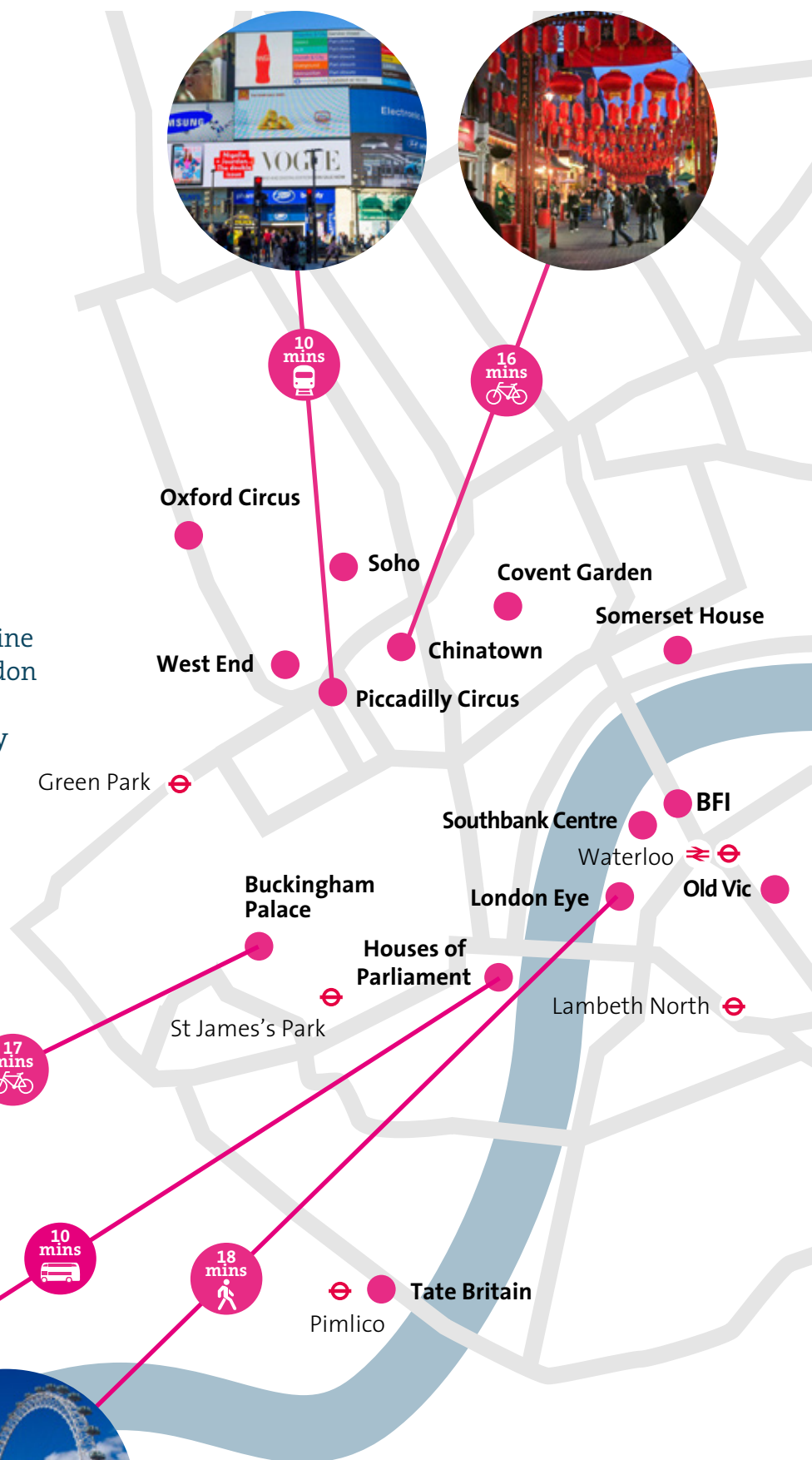
LSBU has extensive, long-term and substantial collaborations with respected higher education institutions throughout the world in countries such as China, USA, Brazil, India and Thailand (see map to the right). These links support the development and delivery of our curriculum, to ensure it is relevant in a global environment. Our collaborations at both undergraduate and postgraduate level range from student and staff exchanges, admission arrangements, articulation agreements and part-franchise masters-level programmes to PhD programmes.

Collaborations map



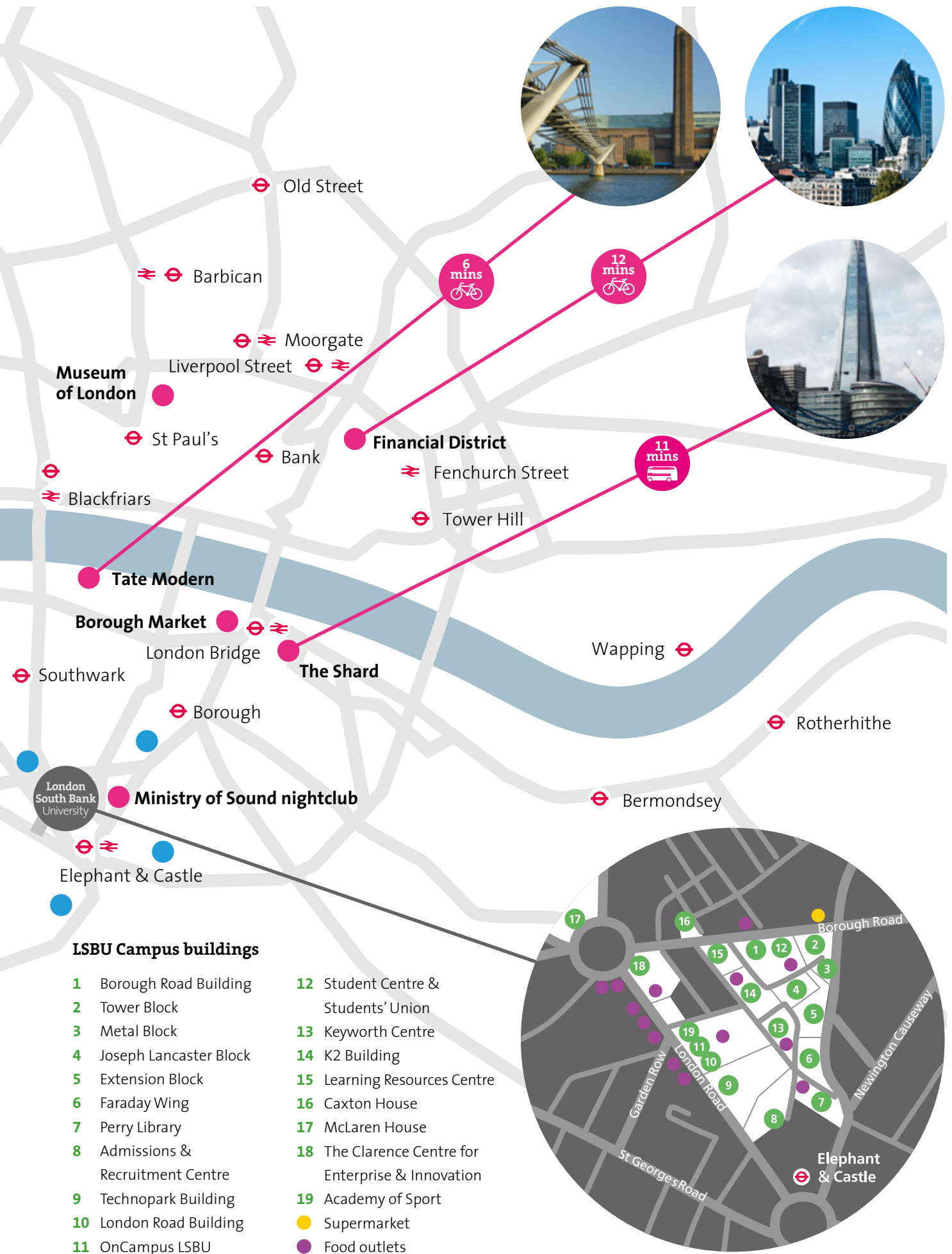
London map

Our central location is 15 minutes' walk from London's cultural South Bank which means you have easy access to all the opportunities and attractions that the capital has to offer. Elephant and Castle, currently at the centre of a £1.5 billion regeneration, is vibrant and exciting, with plenty of shops, bars and cafés to enjoy in the local area. Our main campus is close to mainline stations London Waterloo and London Bridge, next to Elephant and Castle Underground station and served by bus routes from across south and central London.



Key

- Places of interest
- Student accommodation
- ≡ Train station
- ⊖ Underground station

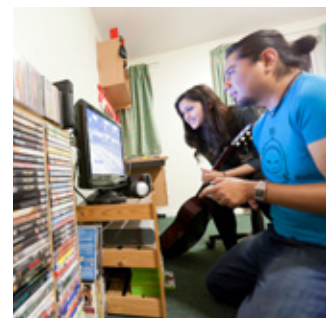




Student accommodation

LSBU accommodation ranked 'best in London' and top 10 in UK

Whatuni Student Rankings 2015



It is important that you arrange your accommodation before you arrive in the UK. The University has several high-quality student residences to choose from and there is also a wide range of private rented accommodation available in London.

London South Bank University has four student residences located within 10 minutes' walk of the Southwark campus. Accommodation is provided within self-contained apartments, with a choice of en-suite and standard rooms. **International students attending LSBU for the first time are guaranteed to be allocated a place in our accommodation if they apply before August 1.** LSBU residences offer:

- a range of costs to suit different budgets
- all-inclusive rents
- internet access in each study bedroom
- onsite management teams and on-call staff
- onsite laundry facilities
- a vibrant central London location

In order to help you settle into life in London, the various apartments are designated to different student groups, so you will be living with students in the same stage of their university experience as you. For example, we have designated apartments for first year undergraduate students and apartments reserved exclusively for postgraduate students.

"Homely, comfortable and very central."

Richard Clifford – BA (Hons) Drama and Performance Studies

"David Bomberg House is very comfortable. The kitchen is nice and I have an en-suite bathroom. The location is also amazing. It's only a five minute walk to the campus and it's in the very heart of London."

Vaishnavi Kanade – MSc Marketing Communications

Our convenient online accommodation application service is available to students who have accepted a place on a course at LSBU.

Accommodation Service

+44 (0)20 7815 6417

accommodation@lsbu.ac.uk

www.lsbu.ac.uk/student-life/accommodation

“McLaren House is fantastic to live in. The staff are helpful and the flats are kept to the highest of standards.”

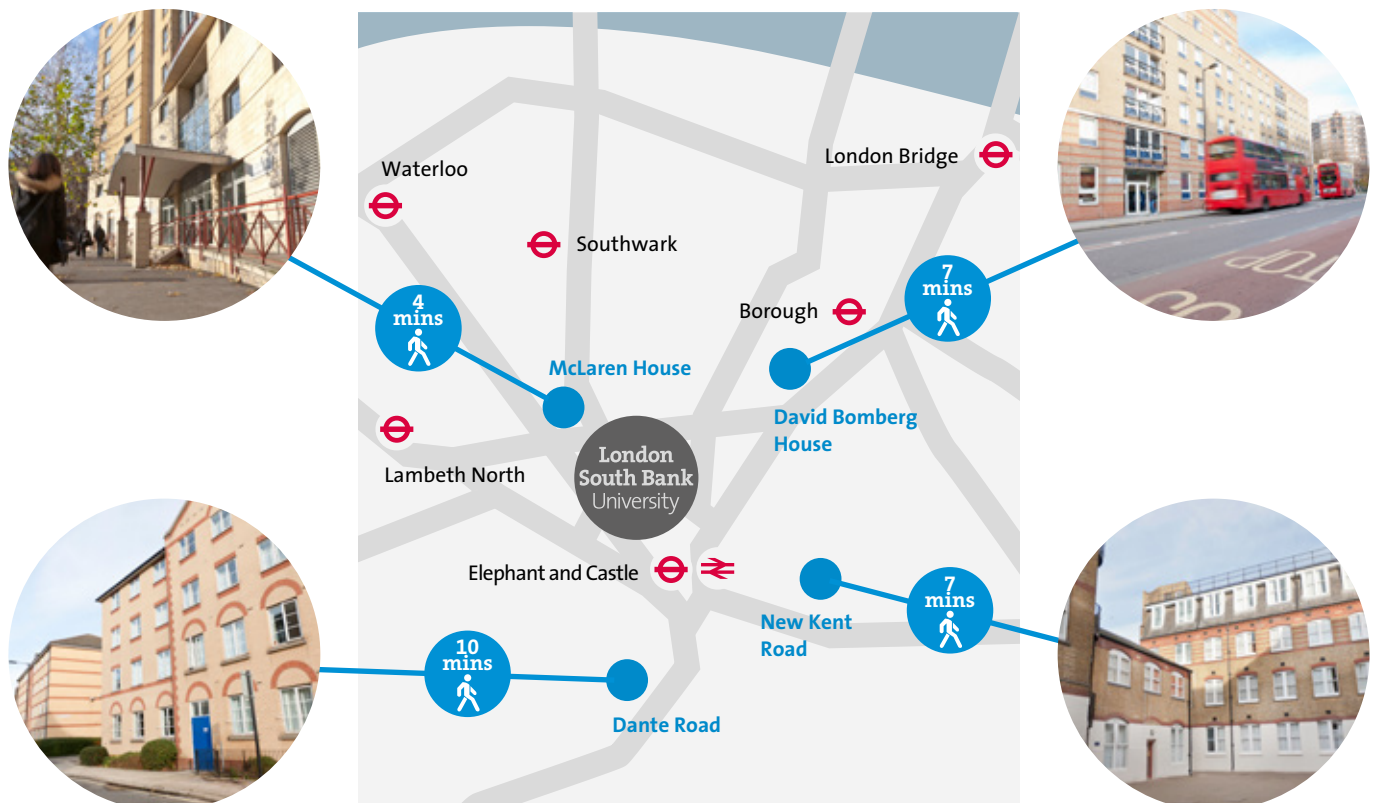
Tyren Webb – BA (Hons) Architecture

Private accommodation

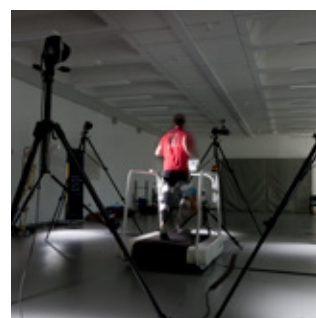
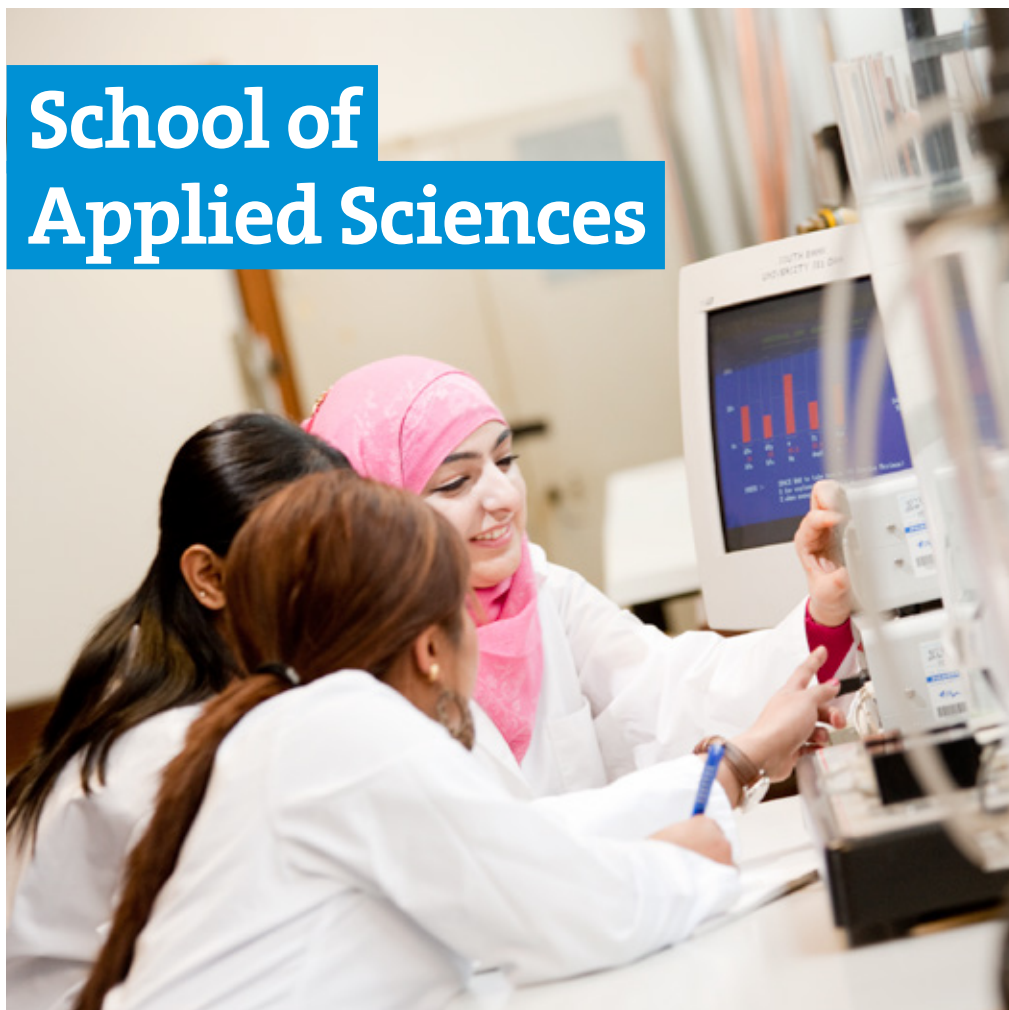
The accommodation office publishes a ‘Guide to Private Accommodation’ to help students who would prefer to live in privately rented flats and houses. The University also collates extensive lists of local landlords and letting agencies.

	David Bomberg House	Dante Road	McLaren House	New Kent Road
Weekly rent 2016/17*	£143.20 with en-suite	£118.50 standard room	£143.20 with en-suite	£118.50 standard room
Number of bedrooms	289	414	614	81
En-suite facilities	Yes	No	Yes	No
Shared kitchen	Yes	Yes	Yes	Yes
Bedroom size (approx)	11.6 sq metres	10.6 sq metres	12 sq metres	11.5 sq metres
Nearest tube	Borough (Northern line)	Elephant & Castle (Northern and Bakerloo lines)	Southwark (Jubilee Line) Elephant & Castle (Northern and Bakerloo lines)	Elephant & Castle (Northern and Bakerloo lines)
Standard letting period	40, 48 or 52 weeks	40 and 48 weeks	39 weeks	40 weeks

* Subject to change year on year. Please contact the accommodation office for up-to-date costs.



School of Applied Sciences



The School of Applied Sciences includes the subject areas of sports sciences, nutrition and food, human biology and psychology, and the National Bakery School.

The School's multi-purpose and specialist laboratories provide the space and instrumentation you'd expect in modern analytical biology, environmental, sports and forensic laboratories.

A purpose-built biochemistry laboratory is equipped with facilities for carrying out a wide range of chemical and biological tests while the forensic laboratories feature the latest analytical equipment, including electron microscopy and inductively-coupled plasma spectrometry, where you can also carry out detailed DNA testing.

Work placements, talks and seminars are organised in partnership with institutions' such as the Metropolitan Police and the National Health Service (NHS), allowing students to get an insight into industry. All science degrees are accredited or developed in partnership with all the leading professional accrediting bodies and graduates from the School go into a wide range of roles. They become scientists in small companies, public institutions or multinational corporations and in the fields of bioscience, healthcare, public health, commercial analysis, food production and sport.

90% of research into Sports and Exercise Science has been awarded the highest quality ratings

Research Excellence Framework 2014

Number 1 University in London for teaching in Forensic Science

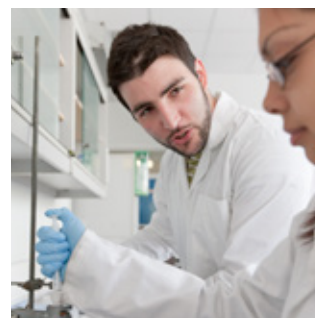
National Student Survey 2016

1894: World's oldest bakery school established

For a full and up to date list of courses on offer please visit www.lsbu.ac.uk

Undergraduate Course List	Intake
HND Applied Biology	Sept
Applied Sciences	Sept
FdSc Foundation Degree Baking Technology Management	Sept
BSc Baking Technology Management (Top-up to BSc)	Sept
BSc (Hons) Bioscience	Sept
FdSc Foundation Degree Culinary Arts	Sept
BSc (Hons) Food and Nutrition	Sept
BSc (Hons) Food Science	Sept
BSc (Hons) Forensic Science	Sept
BSc (Hons) Human Nutrition	Sept
BSc (Hons) Psychology	Sept
BSc (Hons) Psychology specialist courses (Addiction Psychology, Child Development, Clinical Psychology, Forensic Psychology, Health and Nutrition, Sport Psychology)	Sept
BSc (Hons) Sport and Exercise Science	Sept
BSc (Hons) Sports Coaching and Analysis	Sept

Postgraduate Course List	Intake
MSc Food Safety and Control	Sept/ Jan
MSc Addiction Psychology and Counselling	Sept
MSc Investigative Forensic Psychology	Sept
MSc Mental Health and Clinical Psychology	Sept
Graduate Diploma Psychology	Sept





The School of Arts and Creative Industries offers courses at the forefront of creative thinking and multimedia practices, with all courses being taught by practitioners who are active in their fields. Their industry involvement impacts on the relevance of the course content and gives students opportunities to engage with employers.

The School offers outstanding facilities including the new multi-million pound Elephant Studios, an industry-ready media facility that will ensure graduates have the best possible experience and employment outcomes in a fast-changing digital media landscape. It includes studio and production spaces with lighting rigs and green screen, ARRI cameras, a sound recording studio, 11 editing suites for post-production work in film, sound and journalism including high-end grading suites, a fully equipped radio studio, a screening room, a fully equipped newsroom and a dedicated print room. Students will also have access to the 'kit room' to borrow equipment.

The School's teaching and digital media production facilities feature eight laboratories, including 123 Apple Intel computers that run leading software. There's also a game studio with custom-built high-spec PCs and game consoles.

The Edric Theatre is an on-campus contemporary performance space and theatre. There are studios, too, which can be used for creating and rehearsing performance pieces.

Graduates go on to secure jobs in the creative and cultural industries, as well as creating flourishing companies of their own. They work in film, media, media production, new media, photography and television. The companies that many of our recent graduates work for include: Able Media, Apple Genius, BBC, British Association of Picture Libraries and Agencies, British Film Institute, Carbon Media, Channel 4, Doubleclick, Electronic Arts, EMI, EMR Publishing, Endemol, Flame TV, Framestore, Key20, Leo Media Group, Mammoth Productions, Mentorn, Newscorp Berlin, Sky Interactive, Squaresoft and Yahoo.

**Number 1 university
in London for
academic support,
personal development
and learning resources
in Journalism**

National Student Survey 2016

**Number 2 modern
London University for
learning resources
in Drama**

National Student Survey 2016

**Number 1 modern
London University
for organisation
and management,
learning resources
and personal
development in
English studies**

National Student Survey 2016

For a full and up to date list of courses on offer please visit www.lsbu.ac.uk



Case study: Daizi Long MA Creative Media Industries: Journalism



Daizi is from Hubei province in China.

During the course we have to think for ourselves and come up with our own ideas and discuss them in class. The tutors guide us to improve our projects, but

we as students make the final decisions. This course has really improved my confidence and my personal skills. My family think that studying in London has been very good for me as I am now more mature, more confident and more independent.

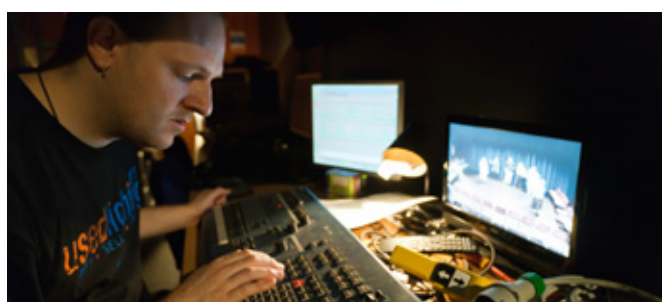
I've managed to get an internship at Xinhua News Agency in China and I know that wherever I choose to work as a journalist, I'd like to promote the culture of both the UK and of China. I'm so glad I did this course and I really love the UK!

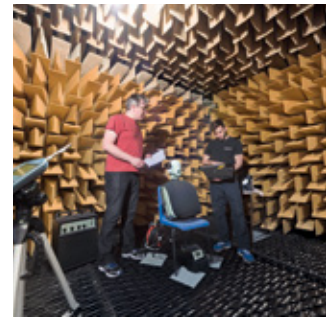
Undergraduate Course List

Undergraduate Course List	Intake
BA (Hons) Arts and Festival Management	Sept
BA (Hons) Digital Design	Sept
BA (Hons) Drama and Performance	Sept
BA (Hons) English with Creative Writing	Sept
BA (Hons) Film Practice	Sept
BA (Hons) Film Studies	Sept
BA (Hons) Games Design and Development	Sept
BA (Hons) Journalism	Sept
BA (Hons) Photography	Sept
BA (Hons) Sound Design	Sept
BA (Hons) Theatre Technologies	Sept
BA/BSc Visual Effects	Sept
BA (Hons) Web production and Social Media	Sept

Postgraduate Course List

Postgraduate Course List	Intake
MA Creative Media Industries – Cultural Management	Sept
MA Creative Media Industries – Journalism	Sept
MA Creative Writing	Sept
MA Critical Arts Management	Sept
MA Cultural and Media Studies	Sept
MA Development Journalism	Sept
MA Digital Film	Sept
MA Digital Photography	Sept
MA Media Writing	Sept
MA New Media	Sept
MA Theatre Practice	Sept





The School of the Built Environment and Architecture has developed into one of the leading schools in the UK built environment sector, where a significant number of the workforce and decision-makers are LSBU graduates.

The School offers some of London's leading courses in areas such as architecture, building services, civil engineering, transport, energy, construction management, property and real estate, project management in construction, quantity surveying and building surveying. All of the courses are closely linked with the industry and accredited by the relevant professional institutions to the highest possible level.

The School has many state-of-the-art facilities; architecture students have their own dedicated design studio space at the top of the Keyworth building which has amazing views across the London landscape. The School also has specialist laboratories such as the anechoic chamber for environmental and building acoustic studies and the Building Information Modelling (BIM) centre. Graduates of the School become architects, building services engineers, civil engineers and quantity surveyors among other professions.

Number 1 London university for teaching, organisation and management, personal development and overall satisfaction in Architecture

National Student Survey 2016

100% of the taught degree programmes carry professional accreditation

1st institution to offer RICS-accredited courses in the country

For a full and up to date list of courses on offer please visit www.lsbu.ac.uk

Undergraduate Course List	Intake
BA (Hons) Architecture	Sept
BSc (Hons) Architectural Engineering	Sept
BSc (Hons) Architectural Technology	Sept
BEng (Hons) Building Services Engineering	Sept
HND Building Services Engineering	Sept
BSc (Hons) Building Surveying	Sept
Built Environment Extended degree programme	Sept
BEng (Hons) Civil Engineering	Sept
BSc (Hons) Civil Engineering	Sept
HNC Civil Engineering	Sept
BSc (Hons) Commercial Management (Quantity Surveying)	Sept
HNC Construction	Sept
BSc (Hons) Construction Management	Sept
BSc (Hons) Property Management (Building Surveying)	Sept
BSc (Hons) Quantity Surveying	Sept
BSc (Hons) Real Estate	Sept

Postgraduate Course List	Intake
MArch/MSc Architecture	Sept
MSc Building Services Engineering	Sept/Jan
MSc Building Surveying	Sept
MSc Civil Engineering	Sept/Jan
MSc Construction Project Management	Sept
MSc Environmental and Architectural Acoustics	Sept/Jan
MSc International Real Estate	Sept
MSc Planning Buildings for Health	Sept
MSc Property Development and Planning	Sept
MSc Quantity Surveying	Sept
MSc Real Estate (Top-up to MSc)	Sept
MSc Structural Engineering	Sept/Jan
MSc Sustainable Energy Systems	Sept/Jan
MSc Transport Engineering and Planning	Sept/Jan

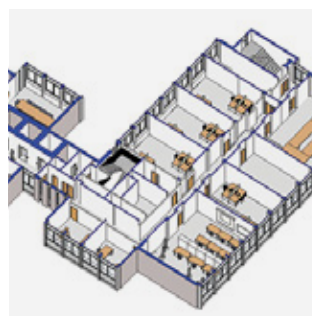
Case study: Frederick Okang MSc Sustainable Energy Systems

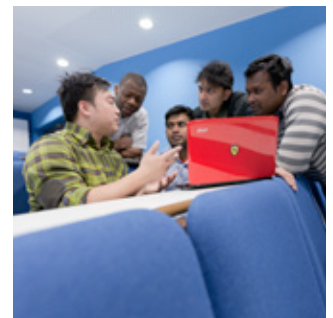


Frederick is from Ghana and first came to LSBU to study a foundation degree in power distribution. He then progressed to study BEng (Hons) in electrical and electronic engineering and then finally to masters level.

One of the things that attracted me to LSBU is that it is among the top ranking modern universities for graduate salaries. They equip graduates with the right skills for their future career success which is important to me.

In the future, organisations and government bodies will be looking for experts capable of advising, designing, building and confirming energy policies. With this qualification, I am hoping to be one of those experts, working with companies like UK Power Networks to continue my learning and become a chartered electrical engineer.





The School of Business offers courses in accounting, business, enterprise, economics, finance, human resources, management and marketing. The School has strong links with industry and the business world, and courses are constantly updated to meet the needs of the workplace.

During their studies, students are provided with as many real-world experiences as possible. These include everything from consultancy projects, live briefs and work placements to business games and simulations. Students enjoy access to an extensive suite of analytical, financial information and research programme and databases including Bloomberg, Thomson One Banker, SAGE, NVivo and SPSS.

The majority of the School's courses are professionally accredited and the School's graduates have an excellent record for employment. Successful graduates progress to a variety of careers in areas such as accounting, banking, human resources, marketing, public relations, software development, data analysis, mobile computing and web development.

The School has recently been awarded the status of Centre of Excellence by the Institute of Enterprise and Entrepreneurs (IoEE). Centre of Excellence status is the IoEE's flagship accreditation for organisations that promote and deliver enterprise skills development – and is in recognition of the School's entrepreneurial culture and leading-edge practice.

Number 1 London university for teaching, academic support, organisation and management and overall satisfaction in Marketing

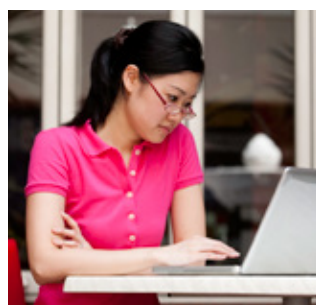
National Student Survey 2016

Number 1 in UK for 'satisfaction with teaching'

*Accounting and Finance
Guardian League Table 2016*

Number 1 London university for teaching, organisation and management, learning resources and personal development for Business studies

National Student Survey 2016



For a full and up to date list of courses on offer please visit www.lsbu.ac.uk

Undergraduate Course List	Intake	Postgraduate Course List	Intake
BA (Hons) Accounting and Entrepreneurship (Top-up to BA (Hons))	Sept	MSc Applied Accounting	Sept
BA (Hons) Accounting and Finance	Sept	MSc Business Project Management	Sept/Jan
FdA Foundation Degree Accounting	Sept	MSc Corporate Governance (Fast Track for ICSA Graduates)	Sept/Jan
BA Business Management	Sept	MSc Digital Marketing (IDM Top Up)	Jan
BA Business Management specialist courses (Accounting, Analytics, Corporate Sustainability, E-Business, Economics, Enterprise and Entrepreneurship, Finance, Human Resources, Law, Marketing, Project Management, Retail)	Sept	MSc Human Resource Management	Sept
HND Business Studies	Sept	MSc International Accounting and Finance	Sept/Jan
BSc (Hons) Economics	Sept	MSc International Business Management	Sept/Jan
BSc Economics specialist courses (Accounting BSc, Business Analytics, Business Management, Corporate Sustainability, E-Business, Econometrics, Enterprise and Entrepreneurship, Finance, Human Resources, Law, Marketing, Project Management, Retail Management)	Sept	MSc International Business Management (with internship)	Sept/Jan
International Business Management Top-up	Sept	MSc International Business Management specialist courses (Finance, HRM, HRM with internship, Marketing, Marketing with internship, Project Management, Project Management with internship)	Sept
BA (Hons) Marketing	Sept	MSc International Human Resources	Sept
BA (Hons) Marketing specialist courses (Advertising and Digital Communications, Corporate Sustainability, Enterprise and Entrepreneurship, Finance, HR, Law, Luxury Brand Management, Project Management, Public Relations, Retail, Supply Chain and Procurement)	Sept	MSc International Marketing	Sept/Jan
BA Public Administration and Management (Top-up to BA)	Sept	MSc International Marketing (with internship)	Sept/Jan
		MSc Marketing (with internship)	Sept/Jan
		MSc Marketing Communications (Top-up to MSc)	Sept/Jan
		MSc Marketing Communications (with internship)	Sept/Jan
		MSc Marketing Management (CIM and IDM Top Up)	Sept/Jan
		MSc Marketing	Sept
		MPA Master in Public Administration	Sept

Case study: Siti Baizura Binti Amran MSc International Health Services and Hospital Management



Siti came to LSBU from Malaysia after talking to a friend who told her about the high quality of the courses offered by the university. She was also attracted to LSBU's central London location.

The MSc International Health Services and Hospital Management is excellent in training students to become the healthcare leaders of the future.

The programme is filled with people from all sorts of professional backgrounds. Getting the chance to work with these great minds, sharing different cultural perspectives and living in the great city of London have made the experience of studying in LSBU extremely interesting and unforgettable.



The School of Engineering has been educating professional engineers for more than 100 years. The School's expertise covers chemical, electrical and electronic, mechanical and petroleum engineering, vehicle design and engineering product design, as well as computer science and informatics.

Students of the School are supported by some outstanding technical facilities. The design and manufacturing workshops feature the latest computer numerical machining technology, industry-standard lathes and metal sheet cutters. The School also houses a range of laboratories including a robotics laboratory, an electronics laboratory and a thermodynamics laboratory. Students in the subject areas of chemical and petroleum engineering benefit from the detailed instruction they receive on a suite of industry-standard software packages.

Students can feel confident in choosing to study engineering at LSBU as the School's industry accredited courses are valued by employers and provide the skills necessary to succeed within the engineering industry. Many graduates progress to become chartered engineers and take up senior positions in the diverse fields of engineering all around the world.

No 1 modern London University for research in general engineering*

Research Excellence Framework 2014
*Based to GPA

Top 10 UK university for 'Teaching Quality' and 'Student Experience' in the area of general engineering

Sunday Times League Table 2016

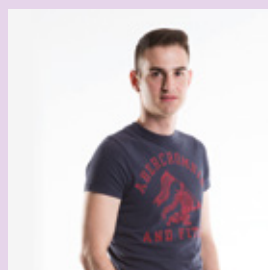
1st institution in UK to admit women to an engineering course in 1920

For a full and up to date list of courses on offer please visit www.lsbu.ac.uk

Undergraduate Course List	Intake
BEng (Hons) Advanced Vehicle Engineering	Sept
BSc/BSc (Hons) Applied Computing (Top-up to BSc/BSc (Hons))	Sept
BSc/BSc (Hons) Business Information Technology (Top-up to BSc/BSc (Hons))	Sept
BEng (Hons) Chemical and Process Engineering	Sept
HND Chemical Engineering	Sept
BEng (Hons) Computer Engineering	Sept
BSc (Hons) Computer Science	Sept
BEng (Hons) Computer Systems and Networks	Sept
BSc/BSc (Hons) Computer Systems Management (Top-up to BSc/BSc (Hons))	Sept
Computing Foundation Year	Sept
BSc/BSc (Hons) Data Science (Top-up to BSc/BSc (Hons))	Sept
HND/BEng (Hons) Electrical and Electronic Engineering	Sept
BEng (Hons) Electrical Engineering and Power Electronics	Sept
Engineering Extended Degree Programme	Sept
Engineering Foundation Year	Sept
BSc (Hons) Engineering Product Design	Sept
BSc/BSc (Hons) Information Technology (Top-up to BSc/BSc (Hons))	Sept
BEng (Hons) Mechanical Engineering	Sept
BEng (Hons) Petroleum Engineering	Sept
BSc (Hons) Product Design	Sept
BSc (Hons) Special Effects Design	Sept
BEng (Hons) Telecommunications Engineering	Sept
BSc/BSc (Hons) Web Development (IT) (Top up to BSc/BSc (Hons))	Sept

Postgraduate Course List	Intake
MSc Advanced Telecommunications and Wireless Engineering	Sept
MEng (Hons) Advanced Vehicle Engineering	Sept
MSc Biomedical Engineering and Instrumentation	Sept
MEng (Hons) Computer Engineering	Sept
MEng (Hons) Computer Systems and Networks	Sept
MSc Electrical and Electronic Engineering	Sept
MRes Electrical Engineering	Sept
MEng (Hons) Electrical Engineering and Power Electronics	Sept
MEM Engineering Management	Sept
MSc Engineering Project Management	Sept
MSc Internet and Database Systems	Sept
MSc IT Management for Business	Sept
MSc/MEng Mechanical Engineering	Sept
MSc Mechatronics, Robotics and Embedded Systems	Sept
MSc/MEng Petroleum Engineering	Sept
MSc Social and Digital Media	Sept

Case study: Rodrigo Prado BEng (Hons) Electrical and Electronic Engineering



Rodrigo is from São Paulo, and like many other Brazilian students he chose to study engineering at LSBU because of the University's strong reputation in the field.

I chose to study at LSBU because it has a very good reputation for engineering; I had heard that their labs were some of the biggest in London. The University also offers students the opportunity to do work placements.

The great thing about LSBU is we are located in London city centre. I really like London. I think it is a great place to be, it is a city that accommodates everyone. I also think that having a British degree looks very good to employers, so I'm really happy I chose to study at LSBU.



School of Health and Social Care



The School of Health and Social Care works in partnership with major organisations and institutions across London and the South East to provide flexible programmes of study underpinned by research and evidence-based practice.

The School's facilities reflect the environments students will work in during their careers in health or social care, giving them the experience and confidence they need to succeed in the workplace. Connections with world-renowned hospitals and Trusts ensure that students experience exceptional training and work placements. The School enjoys strong links with universities around the world and is the only university to offer students work placements at Great Ormond Street Hospital for Children.

Courses are accredited by a number of professional bodies including the Health and Care Professions Council and graduates of the School become occupational therapists, operating department practitioners, diagnostic radiographers, therapeutic radiographers, acupuncturists, midwives and mental health and learning disability nurses.

Study in real-world health facilities

Over 1,000 hours of work placements

(BSc (Hons) Occupational Therapy)

For a full and up to date list of courses on offer please visit www.lsbu.ac.uk

Case study: Jonathan Karusoke MSc Public Health and Health Promotion and Vice-Chancellor's Scholarship recipient



Jonathan was working as a nurse before enrolling in the MSc Public Health and Health Promotion course at LSBU. The course was the ideal choice for him as it has a strong vocational focus.

It's changed my life. My success has made me even more determined to succeed and has given me purpose, focus and determination. I feel that when I graduate, I will make positive changes to the lives of others through education, raising awareness, and sharing knowledge and skills. I look forward to going back to work and promoting public health and health promotion in rural western Uganda, where I was born and grew up.

Undergraduate Course List

Intake

BSc Health and Social Care: Administration and Management

Sept

BSc (Hons) Occupational Therapy

Sept

Postgraduate Course List

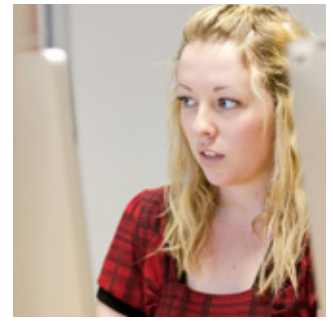
Intake

MSc Public Health and Health Promotion

Sept



School of Law and Social Sciences



The School of Law and Social Sciences has been delivering professionally accredited courses for over 40 years and prides itself on producing successful graduates.

The School offers courses in education, law, social sciences, and urban, environment and leisure studies. From crime and litigation to urban planning, there's a range of exciting courses to choose from.

All qualifying law degrees are regulated and accredited by the professional bodies for solicitors and barristers. In addition to this, the School's planning and hospitality courses are all notable for their strong links with industry.

Work placements are integrated into many of the School's courses, giving students the opportunity to put what they have learned into practice. The School also operates an award-winning Legal Advice Clinic where law students can volunteer and gain real-world experience. Graduates of the School go into a wide range of careers and sectors: they become solicitors, barristers, paralegals and legal executives, hotel managers, travel consultants, tour operators and town and environmental planners.

Number 1 London university for teaching, assessment and feedback and learning resources in Planning

National Student Survey 2016

Number 1 London university for overall satisfaction in Law

National Student Survey 2016

Number 1 London university for assessment and feedback and learning resources in Tourism, transport and travel

National Student Survey 2016

For a full and up to date list of courses on offer please visit www.lsbu.ac.uk

Undergraduate Course List	Intake
LLB (Hons) Business Law	Sept
BSc (Hons) Criminology	Sept
BSc (Hons) Criminology specialist courses (Criminology with Law, Criminology with Politics, Criminology with Psychology)	Sept
BA (Hons) History	Sept
BA (Hons) History specialist courses (History with Politics, History with Sociology)	Sept
BA (Hons) Housing Studies	Sept
BA (Hons) Human Geography	Sept
BA (Hons) Human Geography specialist courses (Human Geography with Planning, Human Geography with Tourism Development)	Sept
BA (Hons) International Relations	Sept
BA (Hons) International Relations specialist courses (International Relations with Criminology, International Relations with Politics, International Relations with Sociology)	Sept
LLB (Hons) Law	Sept
LLB (Hons) Law specialist courses (Business Law, Criminal Law, Entertainment and Media Law, Family Law, Human Rights)	Sept

BA (Hons) Politics	Sept
BSc (Hons) Sociology	Sept
BA (Hons) Sociology specialist courses (Sociology with Criminology BSc (Hons), Sociology with Politics)	Sept
BA (Hons) Tourism and Hospitality Management	Sept
BA (Hons) Tourism, Hospitality and Leisure Management	Sept
BA (Hons) Urban and Environmental Planning	Sept

Postgraduate Course List	Intake
MA/MSc Built Environment Studies	Sept/Jan
LLM Civil Litigation and Dispute Resolution	Sept
LLM Crime and Litigation	Sept
MSc Criminology and Social Research Methods	Sept
MSc Development and Urbanisation	Sept
MSc Development Studies	Sept
MA Events Management	Sept
MA Heritage Tourism and Attractions Management	Sept
MA Housing and Society	Sept
HNC/MA Housing Studies	Sept
LLM International Commercial Law	Sept
LLM International Criminal Law and Procedure	Sept
LLM International Human Rights and Development	Sept
MA International Planning	Sept
MSc International Tourism and Hospitality Management	Sept
(CPE) LLM Law Conversion Course – Legal Studies – Common Professional Exam	Sept
MA London and Global Cities	Sept
MA Planning, Policy and Practice	Sept
MSc Refugee Studies	Sept/Jan
MSc Social Policy and Social Research Methods	Sept
MA Town Planning	Sept
MA Urban Planning Design	Sept
MA Urban Regeneration	Sept

Case study: Nawazish Chowdhury LLB (Hons) Law



Nawazish is now studying a Bar Professional Training Course and hopes to make his career in the legal profession.

I have really learned a lot at LSBU because of the great classes and lecturers. The University also has a lot

of connections with the legal world. They hosted an open day and I met a barrister at that open day and he offered me work as part of my module, which I accepted. Connections like that really allowed me to establish myself in the legal world.

The atmosphere at the University is also really welcoming, which is important if you are just arriving in London for the first time. The welcome I received made my transition from Bangladesh to London much easier.

Preparation programmes

International Undergraduate Foundation Programme (UFP)

IELTS score: Minimum 4.5
Mode/Length: 3 terms
Intake date: September/January

This specialist programme is designed to prepare international students who have completed senior secondary education for entry to a wide range of undergraduate degrees. Successful completion guarantees entry to an LSBU undergraduate degree.* The programme will enable you to develop your language skills, study skills, cultural awareness and subject specific knowledge, ensuring that you're well prepared for the degree you want to study. We know you want to progress to your degree, so achieving the right English level is crucial. To ensure that you get the results you need in your final English exam we assess your progress throughout the course by means of full and regular mock English assessments. That way, when you sit your final exam there won't be any surprises.

Course units

In addition to your English language module you will study a further three modules within the following subject pathways:

- Business, economics, finance and management
- Humanities and social sciences
- Engineering sciences
- Art, design media and film
- Life sciences

**Subject to meeting specific criteria*

International Year 1 (IY1)

IELTS score: Minimum 5.5
Mode/Length: 3 terms
Intake date: September/January

This is a comprehensive programme equivalent to Year 1 of an undergraduate degree for international students with additional English for Academic Purposes, offering progression to Year 2 of BA (Hons) Business Management. This programme is aimed at students who do not quite have the academic grades and/or English level to start the first year of an undergraduate degree at university, but have a stronger profile than that required for the International Undergraduate Foundation Programme.

The International Year 1 Programme will give you a good grounding in your chosen subjects and will allow you to learn the study skills and research methods that you will need during your undergraduate degree studies. To prepare you for the academic style of UK universities, your course will be delivered using the methods you would expect to find at a high, quality university.

In addition to your English Language module you will be studying the following subjects:

- Introduction to management
- Business environment
- Managing financial resources and decisions
- Organisations and behaviour
- Marketing principles
- Business decision, making
- Financial accounting and reporting
- Business skills for proposals and pitches
- Study and communication skills for business

Master's Foundation Programme (MFP)

IELTS score: Minimum 5.0
Mode/Length: 2 or 3 terms
Intake date: September/January/March

This programme is designed for students who aren't eligible for direct entry to LSBU postgraduate degrees in the School of Business. Successful completion of the Master's Foundation Programme guarantees your entry on to a range of related masters degree programmes at LSBU. This specialist programme is designed to ensure that you're well prepared for the LSBU masters degree on which you wish to enrol. To ensure you get the results you need in your final English exam, we assess your progress throughout the course by means of full and regular mock assessments. That way, when you sit your final exam there won't be any surprises.

Course units

2 terms MFP: You will study two compulsory units of research project, personal and professional development, plus English language. You will also choose an academic subject unit, depending on your intended progression degree.

3 terms MFP: You will study two compulsory units of research project, personal and professional development, plus English language. You will also choose two additional subject units, depending on your intended progression degree.

Academic subjects include:

- Marketing principles and business strategy
- Financial accounting and reporting

Pre-Sessional English Language Programmes

These programmes are aimed at students who do not have the English level required for entry to our main degree programmes. Our Pre-Sessional English Language Programmes have been specifically designed to improve your confidence in communicating effectively and prepare you for academic study and the workplace. You will be taught by experienced staff who will work with you to improve your level of English and your study skills. You will attend a combination of classes, lectures and one-to-one tutorials for a total of 25 hours per week. Lessons are highly interactive and you are expected to participate fully, both individually and within work groups.

Minimum entry criteria*

Undergraduate

12 week course: IELTS overall 5.0
(no skills below 4.5)

8 week course: IELTS 5.5 overall
(two skills at 5.0, two skills at 5.5)

5 week course: IELTS 5.5 overall
(only one skill at 5.0)

Postgraduate

12 week course: IELTS overall 5.5
(two skills 5.0, two skills 5.5)

8 week course: IELTS overall 6.0
(one skill at 5.0, rest at 5.5)

5 week course: IELTS 6.0 overall
(only one skill at 5.0)

**Please note that the entry requirements stated above are only a guideline. Every applicant will be assessed on an individual basis. We accept other English language qualifications. Please contact the International Admissions Team for further information. To apply for the above programmes there is no need to submit a separate application. We will consider new applicants automatically for the above programmes along with their application for their main degree programme of study. You will then be sent an offer accordingly. If you already hold an offer and you wish to be considered for the Pre-Sessional English Language Programme, please contact us: international.admissions@lsbu.ac.uk*





With the LSBU Study Abroad programme you can spend some of your time studying in London while earning credits for your degree at home.

If you're an undergraduate or postgraduate student who would like to experience life in London for a semester or a full academic year, then our Study Abroad programme is for you. At LSBU, we offer courses that build on and enhance your studies. Depending on your level and courses of study, you'll have the option to select modules from across the University that fit with your degree programme at your home university.

Why study abroad?

Studying abroad is all about adding value to your time as a student. You'll travel and live in another country, interact with people from different backgrounds and learn from a teaching body with a wealth of professional expertise. You will receive a dedicated orientation programme to help you settle into LSBU and London life and you will study alongside our current students for a fully integrated experience.

To help you make the most of your time in London, you will enrol in a class called London: City of Change, in which you will visit some of London's most culturally enriching locations. This class will give you an insider's knowledge of London which will facilitate your cultural immersion and give you a familiarity you wouldn't get as a tourist.

To complement your studies we offer our Study Abroad students a credit-earning internship programme which you will take in place of one or two of your modules. You will be placed within organisations that best meet your individual interests, abilities and academic background.

For more information on Study Abroad visit
www.lsbu.ac.uk/international/study-abroad

"LSBU offered courses that fit into my major, in the city I wanted to study in. It was a simple choice for me! This experience has changed me in so many powerful, positive ways. I feel like I can conquer the world. London has become such an important place to me, and LSBU is one of the best parts of the city – a school full of interesting, bright students who welcomed me with open arms."

Sara Kiter, Marist College studying
 Advertising and Communications



China Opportunities

Through our award-winning Confucius Institute TCM at LSBU, we support our students in learning Chinese language and culture. This knowledge is highly valued by employers and can be a real advantage if you're aiming to be employed by a global firm. The Institute offers our students short courses and HSK examination. For eligible students, the Institute also offers a Summer School and internships in China and Chinese scholarships which have benefited 50 students in the last year.



**London
South Bank
University**

Case study: Devan Smith Study Abroad programme



Devan Smith is from Chicago, Illinois, USA. In September 2014 she took a semester out from her studies at the University of Illinois to study abroad at LSBU.

I'd always wanted to travel and the Study

Abroad programme allowed me to do that while working towards my degree. I loved my experience in London, I got to meet so many people and experience lots of different cultures.

I am so glad I chose LSBU because it has a great location, close to so many amazing places like Big Ben, Piccadilly and Covent Garden. LSBU has inspired me to keep working towards my goals.

LSBU Study Abroad Programme

Course code	3465
Length of study	1 semester/1 academic year/Summer Programme (4/6 weeks)
Start date	Sept/Jan/June
Entry requirements	<p>Undergraduate students You must be enrolled at an accredited university, with a good academic standing. You must hold a US GPA of 2.75, or equivalent.</p> <p>Postgraduate students You must be currently enrolled at an accredited university on a masters degree programme. Entry criteria will be assessed on an individual basis.</p>

Levels of study in the UK

To help you understand the different levels of study and progression routes at LSBU, we have included the charts below.

Undergraduate

Programme	Description	Duration (full-time study)
Higher National Certificate (HNC)	A vocational higher education qualification.	1 year
Higher National Diploma (HND)	A vocational higher education qualification.	2 years
Top-up	Top-up courses are a means to obtaining a full bachelor's honours degree by building on existing qualifications or experience.	1 or 1.5 years
Honours degree	An undergraduate or first degree course leading to a qualification such as: BA (Hons); BSc (Hons); BEng (Hons).	3 or 4 years

Students who do not meet the University's academic and/or English language entry criteria may consider one of the English language or academic foundation programmes.

Undergraduate Foundation Programme	A course to prepare international students, who have completed senior secondary education, for progression to an undergraduate degree programme.	1 year
International Year 1	A course designed to prepare international students for progression to Year 2 of Business Studies and Business Administration programmes.	1 year

Postgraduate

Programme	Description	Duration (full-time study)
Masters degree	A postgraduate taught programme which includes a significant piece of independent work and leads to a qualification such as: MA; MSc; MBA.	Typically 1 year
Research masters	A research-orientated postgraduate degree programme leading to the MRes qualification.	Typically 1 year
Research degree	A postgraduate research programme that leads to the award of: MPhil; PhD.	Typically MPhil 2 years Typically PhD 3 years

Students who do not meet the University's academic and/or English language entry criteria may consider one of the English language or academic foundation programmes.

Masters Foundation Programme	A course designed for international students whose first degree qualifications do not meet the requirements for direct entry to a masters degree programme.	Typically 1 year
------------------------------	---	------------------



LSBU accepts a wide range of international qualifications. For guidance on whether your qualifications will be suitable, please check the relevant 'country' page on our website www.lsbu.ac.uk/international/your-country

English language requirements

You must have a relevant English language qualification before starting a programme of study at LSBU.

International Foundation level entry

Students joining an International Foundation programme are required to have an overall IELTS score of at least 4.5 (with no less than 4.0 in each skill area) or an equivalent level UK Home Office approved Secure English Language Test (SELT).

Undergraduate and postgraduate level entry

We accept a range of English language qualifications including:

Qualification	Undergraduate degree English language requirements	Postgraduate taught degree English language requirements
IELTS *UKVI SELT	Overall score: 6.0 (with at least 5.5 in each skill area)	Overall score: 6.5 (with at least 5.5 in each skill area)
Trinity College London Integrated Skills in English *UKVI SELT	ISE II (with a pass in each skill area)	ISE III (with a pass in each skill area)

Applications

For information on how to apply, please visit www.lsbu.ac.uk/international/how-to-apply

For further information on the SELT tests and minimum component scores, see the UKVI website www.gov.uk/ukvi

For guidance on whether your English language qualification will be acceptable, please contact our International Enquiries Team at internat@lsbu.ac.uk

LSBU also offers Pre-sessional English courses to prepare students for studying at LSBU—for more details please see [page 25](#).

**LSBU accepts a range of other English language qualifications, please see our website for the full list. The English language criteria outlined above and on our website apply to LSBU only. If you require a student visa to study in the UK, we advise that you check the UK Visas and Immigration (UKVI) English language requirements. You may be required to take a Secure English Language Test (SELT) as specified by the UKVI, and to meet the minimum component scores. Alternatively, if you are enrolling on a course at National Qualifications Framework (NQF) Level 6 or above (degree level or above), and have one of the tests with appropriate scores accepted by LSBU, this should be acceptable.*

Fees and funding

A qualification from LSBU is an ideal investment in your future. An undergraduate, postgraduate or professional qualification from LSBU will give you an internationally recognised qualification which will provide a solid career foundation and excellent employment prospects.

When you are budgeting to study at LSBU you need to consider two different types of costs:

- Tuition fees
- Living expenses

Tuition fees

These fees cover the cost of your learning experience at LSBU. If you are paying your tuition fees yourself, payment must be made when you enrol on your course. If a sponsor is paying your fees, you need an official letter of confirmation from this sponsor that your fees will be paid. International student fees and financial support differ considerably from that offered to students defined as Home or EU. It is important to determine whether or not you are classed as a Home or EU student.

For more information on your student status, please visit the UK Council for International Student Affairs (UKCISA) website www.ukcisa.org.uk

Please visit our website for detailed information about fees for overseas and Home/EU students

www.lsbu.ac.uk/international/fees-and-funding

Tuition fees guidelines

- undergraduate programmes from £11,600 (per year)
- postgraduate programmes from £11,600

Tuition fee deposits

Students who need to apply for a student visa will require an electronic Confirmation of Acceptance for Studies (CAS) number issued by the University to support their student visa application.

Before a CAS number can be issued, students are required to hold a firmly accepted unconditional offer of a place at LSBU and to have paid a tuition fee deposit. Full information about the deposit payment process and terms and conditions of the scheme is detailed on LSBU offer letters.

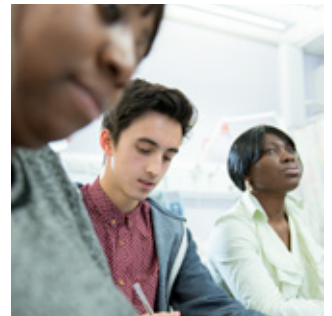
Living expenses

In addition to your tuition fees you will need to budget for living costs while studying in the UK. These costs will generally include your accommodation, food and drink, local travel, study materials and leisure activities. Estimated living expenses for students:

Weekly Expenses	Living in university accommodation	Living in private accommodation
Accommodation	£118.50-£143.20	£120-£300
Food/household shopping	£40-£70	£40-£70
Utility bills	£0	£20-£40
Local travel	£10	£15-£35
Study materials	£10	£10
Entertainment	£10-£30	£10-£30
Other expenses	£10-£30	£10-£30
Total weekly expenses	£198.50-£293.20	£225-£515
Total monthly expenses	£794-£1,172.80	£900-£2,060

Please note that the above figures are estimates intended as a general guide on the cost of living. If you are applying for a student visa, you will usually be required by the UK Home Office to demonstrate that you have a minimum of £11,385 available to cover the cost of maintenance. Please see the Home Office website for further details on the funds required for maintenance costs www.gov.uk/tier-4-general-visa/overview

Scholarships and discounts



In recognition of the value of a diverse student population, the University offers a comprehensive selection of scholarship programmes. International students can access a range of scholarships and tuition fee discounts at LSBU.

Commonwealth Shared Scholarship

The Commonwealth Shared Scholarship is open to nationals of developing Commonwealth countries who are classed as 'overseas' for fee paying purposes, hold exceptional qualifications and are otherwise unable to afford to study in the UK. Scholarship applicants must hold a current offer for an eligible LSBU full-time taught postgraduate course.

Vice-Chancellor's Scholarship

The Vice-Chancellor's Scholarship programme offers a range of awards from £1,000 bursaries to full fee waivers, creating opportunities for a variety of postgraduate students. Students who have firmly accepted an offer of a place on a postgraduate programme at LSBU are invited to apply for these scholarships.

International Scholarships

LSBU International Scholarships of £1,000 are available to overseas fee-paying nationals undertaking full-time undergraduate, postgraduate or PhD studies from 2016 onwards. Eligible applicants holding a valid course offer at LSBU will automatically be considered for the scholarship.

LSBU Graduate Loyalty Scheme

Tuition fee discounts of up to 25% are offered to LSBU graduates progressing directly from a bachelor's degree to a postgraduate or taught postgraduate degree to MPhil or PhD.



5% Early Payment Discount

Students paying their tuition fee in full on, or before, their published date of enrolment qualify for a 5% Early Payment Discount.

Frank Brake Scholarship

From donations received from alumnus and entrepreneur Frank Brake, we are pleased to offer the Frank Brake Scholarship for our MSc Food Safety and Control programme. The scholarship is a tuition fee discount of up to £4,000.

BUTEX International Scholarship

As a BUTEX-affiliated university, we offer the opportunity to apply for the £500 BUTEX International Scholarship. The scholarship is open to all international students enrolling on the LSBU Study Abroad programme.

Kevin Herriott Scholarship

From donations received by LSBU alumnus Kevin Herriott, we are offering the Kevin Herriott Scholarship for our MSc Sustainable Energy Systems programme. The scholarship is a tuition fee discount of up to £4,000.

For more information about each of these scholarships, the eligibility criteria and how to apply, please visit

www.lsbu.ac.uk/international/fees-and-funding/scholarships

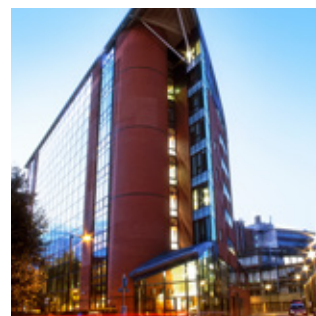
Case study: Wajiha Mehdi Commonwealth Shared Scholarship recipient



Wajiha is from India, which is one of a number of countries that qualifies for the Commonwealth Shared Scholarship.

The Commonwealth Scholarship helped me so much, I was so happy when I found out I had been awarded it! It covered the cost of my tuition fees, travel expenses and living costs. It has given me an excellent opportunity to not only be taught by the best academics in the field of development but it has also given me the chance to explore what this great multi-cultural city has to offer.

Every time I go anywhere I tell everyone how beautiful London is and how close everything is to the University. I can walk to the Southbank, to the river (Thames) and I feel like I am so privileged to live and study where I do.



At LSBU we have a dedicated Immigration and International Student Advice team who can help you with your questions, and guide you through the process of applying for your visa.

It is important that you start your preparations to move to the UK as soon as your place at the University is confirmed. Many overseas students need to apply for a student visa and this process can be very time consuming. If your course lasts more than six months then you will probably need to apply for a student visa under the Tier 4 (General) category of the points-based system. It is essential that you follow the application instructions carefully to ensure that all of the information and documentation required by the UK Home Office is submitted in good time.

If you require a Tier 4 (General) student visa, you should begin planning your application for entry clearance at least four months prior to your course start date. You must have an unconditional offer on a full-time course in order to get a Tier 4 (General) student visa. It is your responsibility to ensure that you follow the current visa application regulations and submit the correct documents for the application.

The main documents/information required for a Tier 4 (General) application include:

- completed student visa application form
- current application fee in local currency
- your current passport and visa and any old passports/visas used to travel to the UK
- a Confirmation of Acceptance for Studies (CAS) – this is a

virtual document which contains information about you and your course of study

- evidence of money – you will need to show that you can pay any remaining tuition fees for the first year of your course and that you have enough money for living costs
- original evidence (e.g. academic qualifications) used to obtain your offer at the University
- medical certificate confirming you have undergone screening for tuberculosis (if applicable – only certain countries are required to do this)

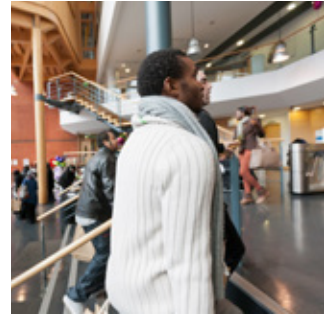
It is important to note that the visa requirements may be subject to change at short notice so check the Home Office website regularly to keep up to date with the regulations

www.gov.uk/tier-4-general-visa

The UK Council for International Student Affairs (UKCISA) also provides useful information online www.ukcisa.org.uk

Credibility interviews

If you are applying for a Tier 4 (General) visa you may be asked to attend an interview in person with the Home Office to confirm that you are a genuine student, and to assess your English language ability. For more information about this, please contact the Immigration and International Student Advice team.



Immigration and International Student Advice team

Our dedicated team can advise you on visa and immigration issues before you arrive in the UK and while you are studying here. The team runs one-to-one appointments, workshops and provides advice and information via email and over the telephone. For more information, please see my.lsbu.ac.uk

Working in the UK

International students who hold a valid student visa are usually permitted to work up to 20 hours per week during term time, and longer hours during the holidays. You can speak to the Immigration and International Student Advice team for guidance about this and read more about it on my.lsbu.ac.uk

In London there is a wide range of part-time work available and the University supports students in identifying suitable work opportunities through the Employability Service. Work is generally available in bars, shops and restaurants and some students are able to secure part-time employment in an area relevant to their study. There are also some opportunities to work for the University.

Working after completion of your course

There are currently opportunities for international graduates to work in the UK after the successful completion of their studies. Our expert Employability Service can give you all the tools you need to secure your dream job on graduation and the Immigration and International Student Advice team can advise you on your visa options.

For a full list of documents and further details about the visa application process, please see our website www.lsbu.ac.uk/international/visas-and-getting-started



In recognition of the value of a diverse student population, the University offers a comprehensive selection of scholarship programmes. International students can access a range of scholarships and tuition fee discounts at LSBU.

The Student Centre

Our innovative new Student Centre houses a wide range of non-academic services and is a central hub for student support and careers information. Its large spacious design provides students with the ideal area for socialising, group study or meeting staff informally. The first floor Grads Café offers a range of meals and refreshments, and in the warmer months there are landscaped areas to enjoy outside.

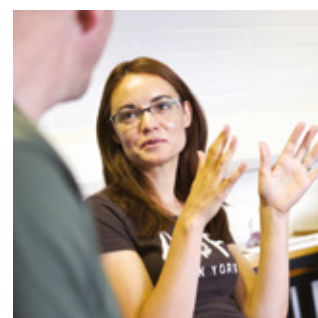
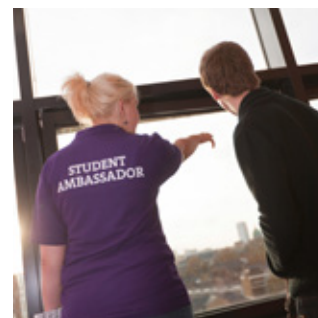
Learning Resources Centre

The Learning Resources Centre provides all our students and staff with free computer access, along with printing, scanning and photocopying facilities. At the beginning of semesters 1 and 2, free training sessions are provided to help students develop their IT skills.

Employability Services

Many international students work part-time during their studies. There are restrictions on the hours you can work if you hold a Tier 4 (General) student visa. You can speak to the Immigration and International Student Advice team for guidance about this and read more about it on the LSBU website.

The Employability Service provides information, advice and guidance that's designed to help you find work experience and employment opportunities. It also delivers workshops and one-to-one advice sessions, as well as collating lists of vacancies publicised through the University JobShop. The service is free to LSBU students and graduates.



Language support for overseas students

The English language you use in higher education can be different from the English you learned at school or college. To help you develop the academic English you need to study at a British university, we offer courses and clinics throughout your time with us. Alternatively, you can take a Pre-Sessional English Language Programme in the months before you join your course.

Library and learning resources

Both our London and Essex campuses have library resources, where specialists have drawn together essential reading materials to reflect the content of our courses. The main library building is on our Southwark campus, where we have:

- 800 study spaces
- a core reference and statistics collection
- subscriptions to 25,000 electronic journals
- resource databases with on and off-campus accessibility
- an extensive range of books and audio-visual material

There is also a health and social care library on the Essex campus and we can arrange inter-library loans.

Mental Health and Wellbeing

Our Student Mental Health and Wellbeing service offers support and advice to any student who is experiencing personal difficulties, struggling to cope at university or just in need of someone to talk to.

Sport and wellbeing

At LSBU, we offer exceptional sport and wellbeing opportunities to all our students. The sports office is home to a wide range of sports clubs and the University has an onsite Sports Centre which includes:

- a fully equipped fitness suite
- a sports hall
- a free weights room
- exercise classes
- therapy services, where you can access massage, osteopathy and acupuncture

Our clubs – run through the Students' Union – also have qualified coaches who can help with your performance and development.



Students' Union

The Students' Union is the centre of the student social scene. It's run for the benefit of students and is the focus for a wide range of sports teams and societies that cover cultural, political and social interests. The Union also has a team of advisers that can assist you with a wide range of issues.

For more information visit www.lsbu.org

Student ambassadors scheme

As an international student, you're welcome to apply to become one of our student ambassadors. The University has over 150 student ambassadors, who are offered the opportunity to work for the University in a number of roles. Student ambassadors are often the public face of the institution, representing LSBU at education fairs, faculty open days and on the front desk in the Admissions and Recruitment Centre.

Equality and Diversity

We're fully committed at LSBU to equality and diversity. We work together to build a learning community founded on equality of opportunity – that celebrates the rich diversity of our student and staff populations.



Disability and Dyslexia Support

Disability and Dyslexia Support provides advice and information about disabilities, specific learning difficulties (including dyslexia) and mental health or other medical conditions. The team also coordinates the support we offer you while you're studying with us.

Multi-Faith Centre

The Multi-Faith Centre offers confidential pastoral care to students irrespective of belief, while the Chaplaincy Service includes representatives from a diverse range of faith groups. We also have a number of student societies representing a range of religions and denominations at LSBU.

Alumni Association

After graduating, you become a member of the LSBU Alumni Association, a global network of 80,000 former students. As a member, you'll enjoy a wide range of benefits, including being able to continue to use campus facilities. You'll also receive our biannual magazine and regular e-newsletters, and will have the opportunity to attend reunion events. For more information visit alumni.lsbu.ac.uk



Enterprise isn't just about starting a business; it's about developing transferable skills that are valuable to any career.

At LSBU, you'll get the chance to develop practical skills and broaden your mindset, whether you're looking to start a business, work as a freelancer or build a career. We offer students plenty of opportunities to gain real-world experience during their studies from practical case

studies, challenges and workshops to guest lectures from inspirational speakers.

You can access support from our Student Enterprise Team during your studies and after you graduate at our Clarence Centre for Enterprise and Innovation where you'll find our Student Enterprise team. It's also home to our student entrepreneurs, businesses, social enterprises and services for the local community including a Business Solutions Centre and a Legal Advice Clinic, both staffed by students.

We also organise enterprise internships – exciting ways to get involved in small start-ups. You can also enter one of our competitions or if you have an idea for a business or social enterprise that you want to test, take part in our Spark programme where you'll receive up to £500 of funding, office space, mentoring and guidance to validate your business idea.

In 2015/16 LSBU's Student Enterprise team :

- supported over 60 new businesses
- engaged more than 5,000 students in workshops, one-to-one sessions and start-up programmes

Case study: Rekha Raaj Anandapadmanaban Graduate Entrepreneur Scheme participant



Rekha graduated from LSBU with an MSc International Business and secured a place on the prestigious Graduate Entrepreneur Scheme (GES). Through the scheme Rekha received

funding and mentoring support from the University to develop her business start-up idea.

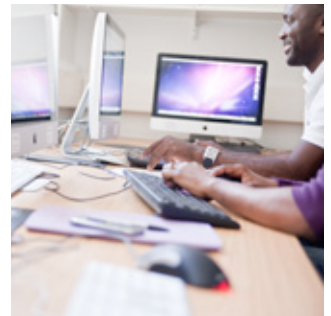
My business is a hotel advertising website. Right now we are focusing on the UK and Europe, but we plan to grow the business globally. The idea for the business was written in India, but the business plan, the strategy and everything else was put in place in London. I am grateful to LSBU Enterprise as the funding I've received has allowed me to further my career and help my business.

Graduate Entrepreneur Scheme

LSBU is a Tier 1 Graduate Entrepreneur authorised endorsing body which means we can issue endorsements to enable students to apply for the Tier 1 Graduate Entrepreneur visa.

For further details, please contact the Immigration and International Student Advice team.

Useful contacts



London South Bank University International Enquiries

103 Borough Road, London,
United Kingdom, SE1 0AA
+44 (0)20 7815 6189
internat@lsbu.ac.uk
www.lsbu.ac.uk/international

UK Council for International Student Affairs

www.ukcisa.org.uk

The British Council

www.britishcouncil.org

The National Academic Recognition Information Centre (NARIC)

www.naric.org.uk

UK Visas and Immigration

www.gov.uk/ukvi

UCAS (for undergraduate applications)

www.ucas.ac.uk

UKPASS (for postgraduate applications)

www.ukpass.ac.uk

The Immigration and International Student Advice team

At LSBU, we have a dedicated advice service that can advise you on visa and immigration issues before you arrive in the UK and while you're studying with us. You can also speak to us about general welfare issues, such as settling into life in the UK, as well as any personal problems you may have.

+44 (0)20 7815 7037/6156/7036

international.advice@lsbu.ac.uk

Disclaimer

Every effort has been made to ensure that the information in this prospectus is accurate, and all information is believed to be correct at the time of publication. Courses are, however subject to change, and while it is expected that all the courses listed will be offered in 2017/2018, we are unable to guarantee this. Those courses that are not yet validated are clearly marked. Please always check our main website course pages for the latest information before making an application.

The relationship between the University and our students is a contractual one and this prospectus contains information which would be considered as part of our contract with you. The terms of this contract include the following, and your acceptance of a place is expressly subject to them.

1. You will be required as a condition of enrolment to submit to, and abide by, the University's procedures, as amended from time to time by the Board of Governors and the Academic Board. These procedures include Academic Regulations, Tuition Fee Regulations and the Student Charter. You may view this in the regulations section of My LSBU: my.lsbu.ac.uk/page/regulations. The University will use reasonable measures to deliver courses and programmes of study in accordance with the descriptions set out in this prospectus. However, this document is produced at the earliest possible date to provide maximum assistance to intending applicants.
2. It is inevitable that changes will occur between the date of printing and the start of the academic year to which it relates. Some changes may be due to resource constraints, others to staff changes or as knowledge in the discipline evolves. In the context of the provision of a diverse range of courses to a large number of students, the University therefore reserves the right to vary the contents and delivery of courses, to discontinue, merge or combine courses and to introduce new courses if such action is reasonably considered to be necessary by the University. In such cases, the University will use reasonable endeavours to provide a suitable alternative course. Such changes may occur either before or after admission.
3. The University does not accept responsibility, and expressly excludes liability, for any modification or cancellation of courses or timetabling constraints as set out in the preceding paragraphs.
4. The University undertakes to provide educational services. It does not, however, guarantee the provision of such services. Should industrial action or circumstances beyond the control of the University interfere with its ability to provide educational services, the University undertakes to use reasonable endeavours to minimise the resultant disruption to those services.
5. The University aims to offer students the maximum flexibility of study within the relevant regulations and the academic timetable is drawn up with this objective in mind. However, no timetable can guarantee that all modules advertised will be available to all students who are qualified to take them.

Acknowledgements

Designed by Positive2: www.positive2.co.uk

Printed by BPO intelligence: www.bpointelligence.com

London South Bank University is a charity and a company limited by guarantee.

London South Bank University

**LONDON SOUTH BANK
UNIVERSITY**



London South Bank University

International Enquiries

103 Borough Road, London

United Kingdom, SE1 0AA

+44 (0)20 7815 6189

internat@lsbu.ac.uk

www.lsbu.ac.uk/international

Connect with us on social media

 facebook.com/LSBUInternationalStudents

 youtube.com/londonsouthbankuni

 weibo.com/lsubuj

 WeChat: 2036609925

