



UNIVERSITY OF
BIRMINGHAM

International Guide

Now is the time



We explore
We activate

birmingham.ac.uk

Contents

Why choose Birmingham	3
Your journey to Birmingham	4
How to apply	6
Applying for an undergraduate programme	8
Applying for a taught postgraduate programme	9
Applying for a research programme	10
Key dates for international students	12
Information on your visa	13
Funding your studies	14
Scholarships and funding opportunities	16
Your future career	18
Career opportunities	20
Your city	22
Your campus	24
Your facilities on campus	26
A place to call home	28
Living costs	30
Teaching quality and support	32
Supporting you during your studies	34
Study with us in Dubai	36
Meet us	38
Make notes	39

Follow us on social media

-  @unibirmingham
-  /unibirmingham
-  @unibirmingham
-  @unibirmingham
-  @unibirmingham

Why choose Birmingham?

When you choose Birmingham, you are choosing to study at an outstanding university, renowned for changing lives and transforming society.

1st

choice for leading
graduate employers in
**High Fliers Graduate
Market in 2024**

80th

in the **2025 QS
World University
Rankings**

10

alumni and former staff
members **awarded a
Nobel Prize**

Diverse

10,000+ international students from
more than 120 different countries

13th

in **The Complete
University Guide
2025 Rankings**



Your journey to Birmingham

- 1 Start your undergraduate application via UCAS or your postgraduate application via the University website
- 2 Upload all documents such as your ID, CV, personal statement, qualifications, predicted grades, English language certificate
- 3 Conditional offer is issued
- 4 Satisfy all conditions - uploading all relevant documents, attending interviews where applicable and for postgraduate applicants paying the deposit.
- 5 Unconditional offer is issued
- 6 CAS Letter is issued
- 7 Start your visa application
- 8 Attend pre-departure sessions
- 9 Complete your online registration
- 10 Travel to Birmingham





How to apply

We hope you're as excited to study in the UK as we are to welcome you. Here, we'll guide you through the application process for your chosen course and give you some important information.

Supporting documents

Whether you're applying for an undergraduate or postgraduate programme, you'll need to provide us with some supporting documents. These usually include:

- Transcript or statement of your results, showing your highest qualification or predicted grades (you don't need to provide originals or certified copies at the application stage)
- One or two references
- If English is not your first language, please provide a copy of your IELTS, TOEFL, Pearson Academic Test Certificate or alternative qualification. You can find more information about English language requirements on our website
- A copy of your passport's personal details page

Foundation pathways

A route into our undergraduate degrees, studying on campus. Apply to our September or January pathways:
[birmingham.ac.uk/foundation](https://www.birmingham.ac.uk/foundation)

Studying abroad and exchanges

Sample life in the UK and at our university. Apply to our Study Abroad programme:
[birmingham.ac.uk/incomingstudy](https://www.birmingham.ac.uk/incomingstudy)

Applying for undergraduate study with your results

If you haven't applied for undergraduate study before the UCAS deadline, or haven't got the grades you're hoping for, you can still apply for an undergraduate degree through Clearing. This happens after **30 June**. Learn more about Clearing: [birmingham.ac.uk/clearing](https://www.birmingham.ac.uk/clearing)

Postgraduate applicants

If you need a visa to study in the UK, you'll typically need to apply by **July of the year you wish to study**. Unfortunately, we're not able to consider applications after the deadline.

Some of our programmes may have earlier deadlines and/or a staged admission process. Please check our course web pages for full details.

Unsure of which postgraduate degree you should choose?

If you wish to further your knowledge, prepare for a research degree or change career, then a taught Masters course could be right for you. We offer a range of taught Masters degrees, usually in the form of a Master of Arts (MA), or Master of Science (MSc). However, they can also include Master of Education (MEd), Master of Engineering (MEng) and Master of Business Administration (MBA).

A research Masters such as an MRes or a MA by Research may be for you if you want to balance the taught elements of your degree with a longer research project. These courses typically take one year to complete.

Doctoral degrees, such as the PhD, are the highest level of academic qualification and typically take four years to complete. [birmingham.ac.uk/postgraduate](https://www.birmingham.ac.uk/postgraduate)

Is English a requirement of your offer?

We offer Pre-sessional English courses all year round for international students holding a conditional offer where English is a requirement. Our courses offer an alternative to re-taking IELTS for Birmingham entry and will improve your knowledge and confidence in English and academic study skills.



Find out more about our foundation pathways and pre-sessional English programmes
[birmingham.ac.uk/bia](https://www.birmingham.ac.uk/bia)

Applying for an undergraduate programme

You can apply to one of our undergraduate degrees through UCAS. Here's how it works:

1 Apply through UCAS between early September (prior to the year you wish to study) and **30 June** (in the year you wish to study).

We encourage students to apply by the 2nd UCAS deadline – the **end of January**. While late applications may be considered for some programmes, availability cannot be guaranteed.

If you're looking to study Medicine or Dentistry, you'll need to apply by **mid October**.

You can apply to up to five different choices on: ucas.com

2 Once a decision's been made on your application, UCAS will contact you.

If you're successful, you'll then receive an offer.

3 If you have multiple offers from universities, UCAS will ask you to confirm which two offers (if any) you want to hold while you wait for your exam results. You'll need to choose your 'firm choice' programme and your 'insurance'. This is your second option in case you don't get the grades needed for your firm choice.

4 If you meet the conditions of your offer, congratulations! Your place on the programme will be confirmed.

5 If you're looking to study on a student visa, you'll be issued a Confirmation of Acceptance for Studies (CAS).



Applying for a taught postgraduate programme

Applying for our taught postgraduate programmes is simple. Just follow these three steps:

1 Find your course online: birmingham.ac.uk/pgcourses

2 Before you apply, check that you meet our entry requirements. You'll find details of these on your course web page.

3 Complete the online application form on the course web page, remembering to upload your supporting documents.*

* Some taught courses may charge a £50 application fee.

If you're interested in our Social Work and Initial Teacher Training programmes, you'll need to apply for these through UCAS. You can register and apply as soon as the UCAS portal opens (usually in September).

Discover more about our postgraduate taught and research courses: birmingham.ac.uk/pgapply



Applying for a research programme

If you'd like to study a research degree with us, there are two routes you can take.

Apply for an 'advertised PhD'

An 'advertised PhD', simply means that it's part of an established research project at the university. It's also usually funded by us, or another funding body. Most of the time, the advertised listing will direct you to the correct course page, where you can check the requirements and apply.

- 1 Explore our current research projects: birmingham.ac.uk/findaphd
- 2 Prepare your personal statement and any supporting documents.
- 3 Submit your application online through our course finder and upload your supporting documents.

Once we receive your application, it usually takes four to six weeks for us to review it. You can track your progress and get updates from us through the Applicant Portal.

If we make you an offer, it will either be unconditional or conditional. If you accept and meet the conditions, we'll confirm your place. If you're looking to study on a student visa, we'll provide you with a Confirmation of Acceptance for Studies (CAS).

Apply to propose your own research

You're not limited to our existing projects. You can propose your own research too. First, you'll need to submit a proposal for your research. This includes identifying the supervisor you'd like to work with. To pay for your research, there's a range of funding, including scholarships, charities, loans and self-finance.

- 1 Think about the type of research degree you'd like to study (PhD, MA/MSc by research or MRes) and explore our research themes.
- 2 Find and consult with a supervisor or department: birmingham.ac.uk/findasupervisor
- 3 Explore research funding options and look through our scholarships and funding database: birmingham.ac.uk/pgfunding
- 4 Write your proposal as a clear and concise summary of your research. It's a key part of your application, so take your time. Your potential supervisors will use it to decide if your research is something they can support.
- 5 Prepare your personal statement and supporting documents.
- 6 Submit a formal application by visiting the course page of the subject most relevant to your area of research.



Key dates for international students

Undergraduates

September	UCAS applications open
October	Medicine and Dentistry deadline
January	UCAS deadline for the majority of courses
June	UCAS applications close
July	UCAS Clearing opens for international students
September	Semester One begins

Postgraduates

If you require a visa to study in the United Kingdom, you will typically need to apply by **July in the year you wish to study**. We are not able to consider applications made after this date.

Please note, some of our programmes, including programmes in the Business School and Computer Science, may have earlier deadlines and/or a staged admissions process. Please check our course pages for more information.

Information on your visa

Applying for your student visa

Confirmation of Acceptance for Studies (CAS) is an electronic document issued to students who need to make a Student Route visa application. New students will be sent a CAS number as part of the admissions process.

Immigration Health Surcharge

The student visa application will also include an 'immigration health surcharge' (IHS). This charge must be paid even if you have your own private medical insurance.

Applying for your student visa

The following link provides user friendly advice on the documents you need to prepare for a successful student visa application as well as a link to 'Apply online'.



More Information about student visa:
gov.uk/student-visa

Low Risk Nationals

If you are a national from any one of the countries listed under the 'differential evidence requirement' (for example EU, China or the USA), you do not need to prove you have enough money to support yourself when you make your visa application.

The decision letter or email from UK Visa & Immigration (UKVI) will confirm your visa has been granted, the start and end date of the visa duration and visa conditions.

It should also confirm your Biometric Residence Permit (BRP) collection details. After arrival to the UK, applicants must collect their BRP physical card in the UK from their chosen post office address (or will be contacted by university if using ACL code).

You will also need to consider the cost of any visa applications as well as budgeting for the immigration health surcharge.



More information about costs:
birmingham.ac.uk/studentvisas

Ask our students

Any questions about life at Birmingham? Get advice from our current students who are happy to help you.

Ask a postgraduate student: birmingham.ac.uk/postgradchat

Ask an undergraduate student: birmingham.ac.uk/chat



Funding your studies

Tuition fees

Paying for your studies is simple. We charge an annual tuition fee, covering the cost of your tuition, examinations, access to IT facilities and the library. It also includes your membership with the Guild of Students. You'll pay your fees at the start of your programme.

Cost of tuition

This can vary depending on your chosen programme and level of study, but you can find out more on our course web pages.

We'll give you full details about the fees you'll pay in your offer letter. But you can also check our latest international fees before applying:
birmingham.ac.uk/international/fees

Fees and funding advice

International students undertaking a postgraduate taught degree are required to pay a tuition fee deposit before an electronic Confirmation of Acceptance for Studies (CAS) can be issued.

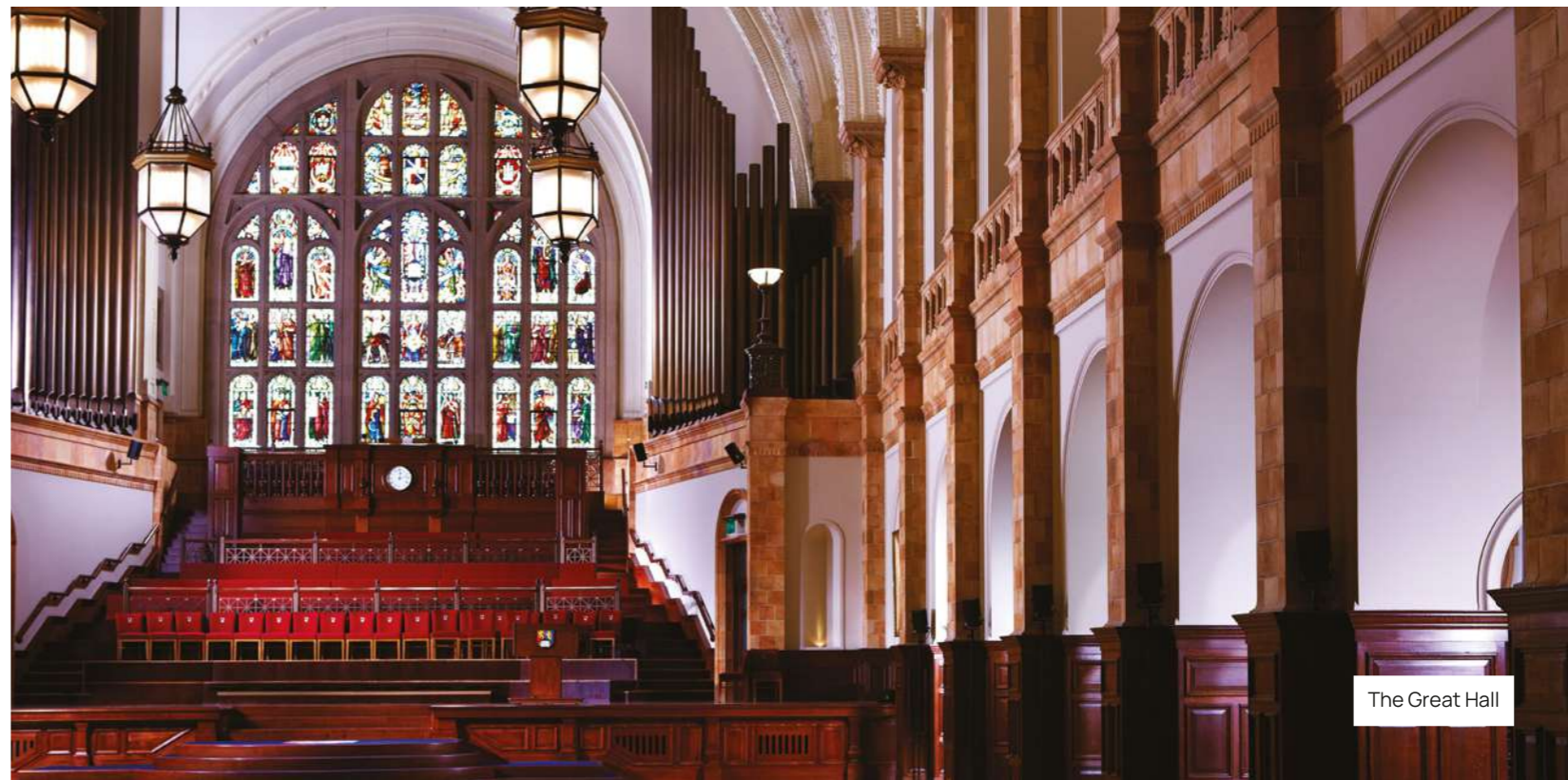
You do not need to pay a deposit if you are applying for a postgraduate research programme including PhD, MPhil or MSc by Research.



How to pay your deposit:
birmingham.ac.uk/int-deposits



Aston Webb



The Great Hall

Scholarships and funding opportunities

At Birmingham, we believe in removing barriers to education, so all of our talented students can achieve their full potential. This year, we've increased our international scholarship funding by £2 million, rewarding outstanding achievement and helping more international students to study with us.

Undergraduate scholarships

In the last academic year, we awarded half a million pounds in tuition fee discount scholarships to international undergraduate students, and this is set to increase next year. Continuing this tradition of rewarding academic excellence, we're growing our international scholarships for undergraduate students. We also offer a range of scholarships linked to specific subjects, ranging from £1,500 – £8,000.



International scholarships:
[birmingham.ac.uk/
international-scholarships](https://www.birmingham.ac.uk/international-scholarships)

Postgraduate scholarships

Our Global Masters 125th Anniversary Scholarship will award more than 700 international students from select countries, enrolling at Birmingham in 2025, with an automatic scholarship of up to £4,000 applied as a tuition fee discount (subject to terms and conditions on our webpages). For students joining our Dubai campus, we are offering scholarships up to 30 per cent.



Sponsorship, loans, and financial aid

We're an approved institution for hundreds of government ministry scholarships and other sponsoring organisations around the world. In the 2023/24 academic year, we were home to 1,000 international students from 167 different sponsoring organisations around the world, including the Saudi Arabian Ministry of Education, LPDP Indonesia, The Turkish Ministry of National Education, and Said Foundation, to name a few.

Learn more about our sponsors:
[birmingham.ac.uk/sponsors](https://www.birmingham.ac.uk/sponsors)

More good news. We're approved to offer the USA Federal Direct Loan Programme and certify USA loans via private lenders.

You can learn more about USA and Canada loans here:
[birmingham.ac.uk/international-loans](https://www.birmingham.ac.uk/international-loans)

Part-time employment

A part-time job is a great way to boost your income and gain valuable work experience.

Worklink advertises temporary and part-time positions.

Careers Network supports with job hunting, career selection, CVs, interview practice, work experience, assessment centre preparation and internships.

The Student Route visa allows students to work up to 20 hours per week during term time, and full time during holiday periods.

For more advice and information, please visit:
[birmingham.ac.uk/ptwork](https://www.birmingham.ac.uk/ptwork)

Search for undergraduate funding:
[birmingham.ac.uk/ugfunding](https://www.birmingham.ac.uk/ugfunding)

Search for postgraduate funding:
[birmingham.ac.uk/pgfunding](https://www.birmingham.ac.uk/pgfunding)

Apply and learn more about our scholarships:
[birmingham.ac.uk/internationalscholarships](https://www.birmingham.ac.uk/internationalscholarships)

Your future career

Get ready for tomorrow with our dedicated Careers Network. From developing skills and experience to building your confidence, our support will help you stand out. We're the most targeted university by the UK's leading graduate employers in 2024.

(Graduate Market High Fliers Report)

Exclusive opportunities

Gain real-world experience while you study. Our Careers Network offers funded work placements across all kinds of sectors, plus direct access to hundreds of employers through careers fairs, workshops and presentations. We even run internships, exclusive to our students.

Our Personal Skills Award also helps our undergraduate students to recognise, develop and articulate their skills, so they are fully prepared when applying for jobs.

Real-world challenge

Our unique Global Challenge gives you the chance to work with a top global company matched to your area of interest. Each internship is fully funded, placements include the British Consulate in Chicago, Museum Victoria in Melbourne, Australia and GlaxoSmithKline in Morocco, Argentina and Singapore.

Your career, your way

It's your future, so develop it how you choose. Our Careers Network mentoring schemes will match you with an expert suited to your area of interest. From career planning to application workshops, drop-ins and one-to-one appointments, you'll have lots of opportunities to develop. If you'd like to set up a business after graduation, we even provide entrepreneurial and freelance support.

A lifetime of support

If you ever need specialist career support, our dedicated teams are here to help. From working in the UK to events featuring top employers and Birmingham alumni, we'll support you long after you graduate.

It could be advice on your career path, which further study route to take, how to secure funding, or which field of research to pursue. Whatever you need, you'll enjoy full access to our careers services. Both while you study, and long after you graduate.



Discover a world of career opportunities:
birmingham.ac.uk/career

Career opportunities

University is about more than academic learning. It's about getting you ready to enjoy the best career possible. That's why our goal is to equip you for the future, with a range of opportunities to support your personal and professional development.

Our Careers Network offers expert support for all international students. From our international careers consultants to our team of student ambassadors, everything is in place to help you develop skills for work or further academic study. Whether you want to take the next step in your home country or elsewhere.

Give your career the best start possible:
birmingham.ac.uk/career

A global network

Enjoy the support of a global network of alumni. Once they graduate, our students remain an active part of our community, meaning you can benefit from their advice.

Our alumni love to share their career experiences, giving you a unique insight into their journeys. They're also a great source of professional support. From guest lectures and mentoring, to work experience and placements, we encourage all our graduates to share their knowledge with new students just like you.

Discover a global network of support:
birmingham.ac.uk/alumni

International career opportunities

Advance your career before you graduate and find job opportunities in your home country and beyond. At Birmingham, you'll have access to a huge database of employers, vacancies and industry trends for countries around the world.

You'll also be able to visit fairs, workshops and presentations attended by many large, global companies, offering opportunities worldwide.



What support is available to you?

We offer many opportunities for you to make the most of your student experience, on and off campus. We can help you to gain experience, develop a broad range of skills and make useful contacts for your future career:

- One-to-one career guidance from college-specific advisors
- CV and job application advice
- An annual programme of careers fairs on campus
- Employer presentations – make contacts and find out more about what companies and organisations have to offer
- Careers workshops to help you with areas such as interview skills and finding work experience
- Graduate mentoring
- Skills training for postgraduates, including real-world business challenges
- Bespoke careers support, event skills training and careers conferences specifically for postgraduate researchers
- Entrepreneurial skills training – support and advice on setting up your own business
- Online career action planning tools and self-enrolment career development courses – use in your own time to support your career planning
- International Careers Consultant and International Employer Liaison Officer

Each of our colleges also has its own careers and employability team. These teams deliver tailored programmes of careers events for you, and can provide you with advice and guidance services at locations within the colleges.

Your city

With its friendly, diverse community, Birmingham is a modern, global hub within easy reach of the green English countryside. A centre for arts, culture, shopping and entertainment, the city is also home to the largest creative and financial sectors outside London. The perfect place to connect, grow and thrive.

Food

We have more than

800

restaurants

Serving food from

27

different countries

Proud to showcase

9

Michelin star restaurants

Culture

600

parks and open spaces

50

festivals each year

4

million visitors in 2023

Sport

We hosted the **Commonwealth Games in 2022**

We host the **Annual Aegon Classic Tennis Tournament**

We are home to **Edgbaston Cricket Ground**

Explore

Stratford-upon-Avon
The birthplace of Shakespeare

Ironbridge
A World Heritage Site

Historic canals
From our industrial past



Explore your city:
birmingham.ac.uk/city

Your campus

Rich in history on a leafy, green estate, our main campus is an inspiring place to live and learn. Located in the neighbourhood of Edgbaston, the campus sits on 250 acres of parkland, featuring lawns, trees, a lake and works of sculpture.

Our domed, red-brick buildings may be rich in heritage, yet the campus is equally modern. With all the amenities of a small town, you'll find shops, bars, and cafés, plus medical and dental surgeries, sports facilities and even our own train station.

The campus is also connected to other university sites, including The Shakespeare Institute, located in the historic town of Stratford-upon-Avon.



Discover what makes our campus one of the most beautiful in the UK with our virtual tour:
birmingham.ac.uk/virtual-tour

Queen Elizabeth Hospital

The Medical School

The Vale Accommodation

University Station

Main Library and Teaching and Learning Building

The Green Heart

The Great Hall

To the Guild of Students

Sport & Fitness



Your facilities on campus

Be part of a diverse community. Learn, relax and socialise on our green, spacious campus.

Just seven minutes by train from the UK's vibrant second city, we're regularly investing in facilities to meet the needs of our diverse student community, such as our School of Engineering and Collaborative Teaching Laboratory.

Featuring modern buildings and natural surroundings, our campus is the perfect place to study and live.

Sport

Love to be active? Our university and city are top destinations for sport. We were an official partner of the Birmingham 2022 Commonwealth Games that put us on the global stage for sport.

Our city has triumphed in its bid to host the 2027 Invictus Games. Just five years after the Commonwealth Games came to the city, we will host yet another international sporting competition.

From beginners to elite athletes, there's something for everyone. With a 50-metre Olympic size swimming pool, 200-station gym, group exercise classes and much more, our university Sport & Fitness Club lets you challenge yourself physically, or simply relax and have fun.

Libraries

However you like to study, our main library has the facilities for you. There are spaces for group study, silent study and informal areas, too. You'll also find specialist libraries and resources across campus, with lots of online resources to study and learn at home.

Green spaces

Feel closer to nature while you study. The Green Heart is a stunning space for you to work, relax and meet with friends. A 12-acre parkland, it's home to wildflowers and a community garden, where you can enjoy a peaceful break between classes.

The Guild of Students

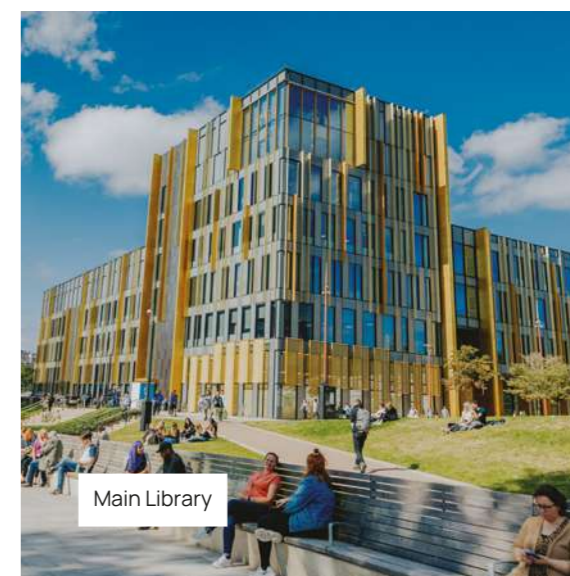
Between your studies, you'll enjoy lots of opportunities to relax and have fun. The Guild is your Students' Union. They host a range of events through the year to help you socialise and make new friends. Here to provide you with support, advice and entertainment, there are more than 300 student groups, and clubs for you to join.



Find out more about the student experience:
birmingham.ac.uk/experience



Find out more about the student groups and societies:
guildofstudents.com



A place to call home

Enjoy your independence in a safe, welcoming and friendly environment. Wherever you decide to live, we have several accommodation villages to choose from.

Each one is a short walk from our main campus, with its own student community and social hub. Everything you need to feel at home.



Find out more about the accommodation options:
birmingham.ac.uk/accommodation

International Guarantee Scheme

As an international student, you'll be guaranteed accommodation in your first academic year of study.

To qualify, you'll need to have firmly accepted your offer to study with us. International undergraduate and postgraduate students are guaranteed an opportunity to book their room by **31st of July**.

The Vale Village

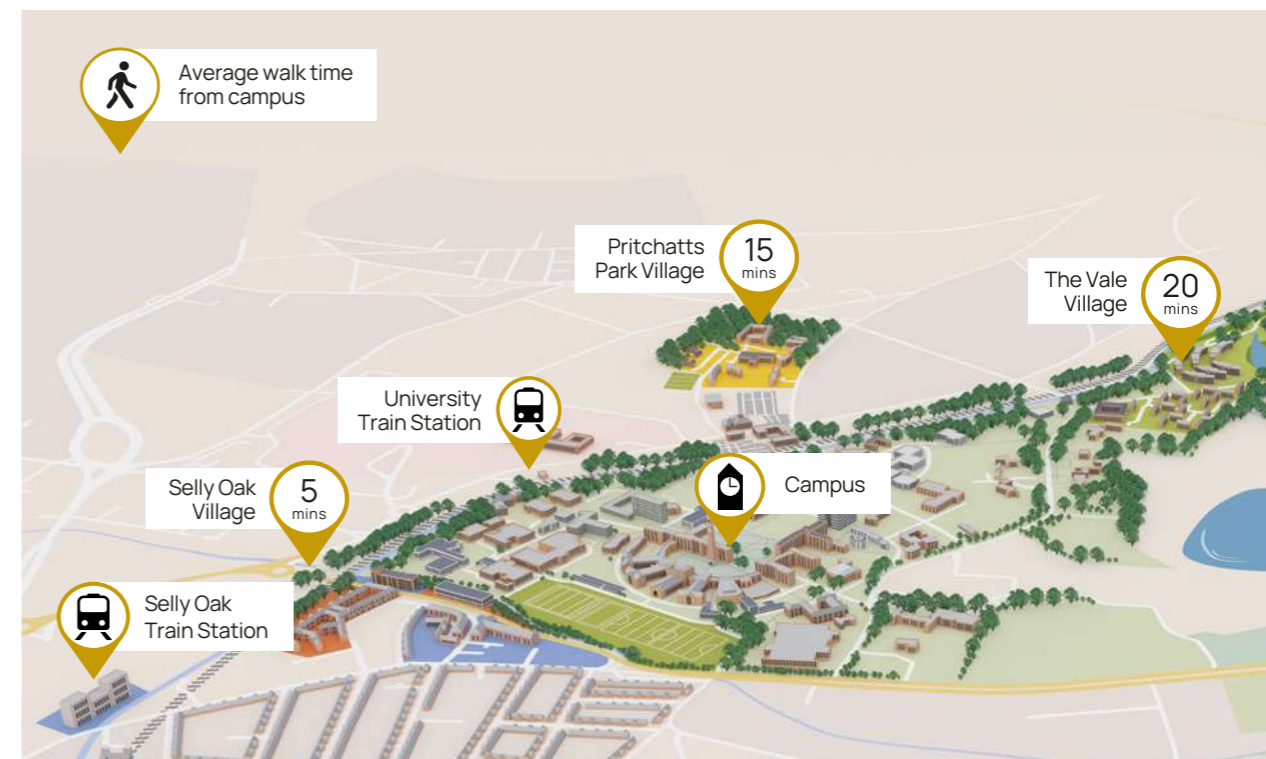
Surrounded by green parkland, the Vale Village is just a 20-minute walk from the main campus. With a range of accommodation to suit every need and budget, the Vale is centred around the Hub, featuring a restaurant, café, bar and convenience store. The Hub is also a great place to study and socialise with your fellow residents.

Selly Oak Village

Live in the heart of a thriving student area just a five-minute walk from campus, Selly Oak Village offers a vibrant mix of bars, cafés, dining and supermarket shopping. Over 900 students live here already, with most of our partner accommodation and private student housing a short walk away.

Pritchatts Park Village

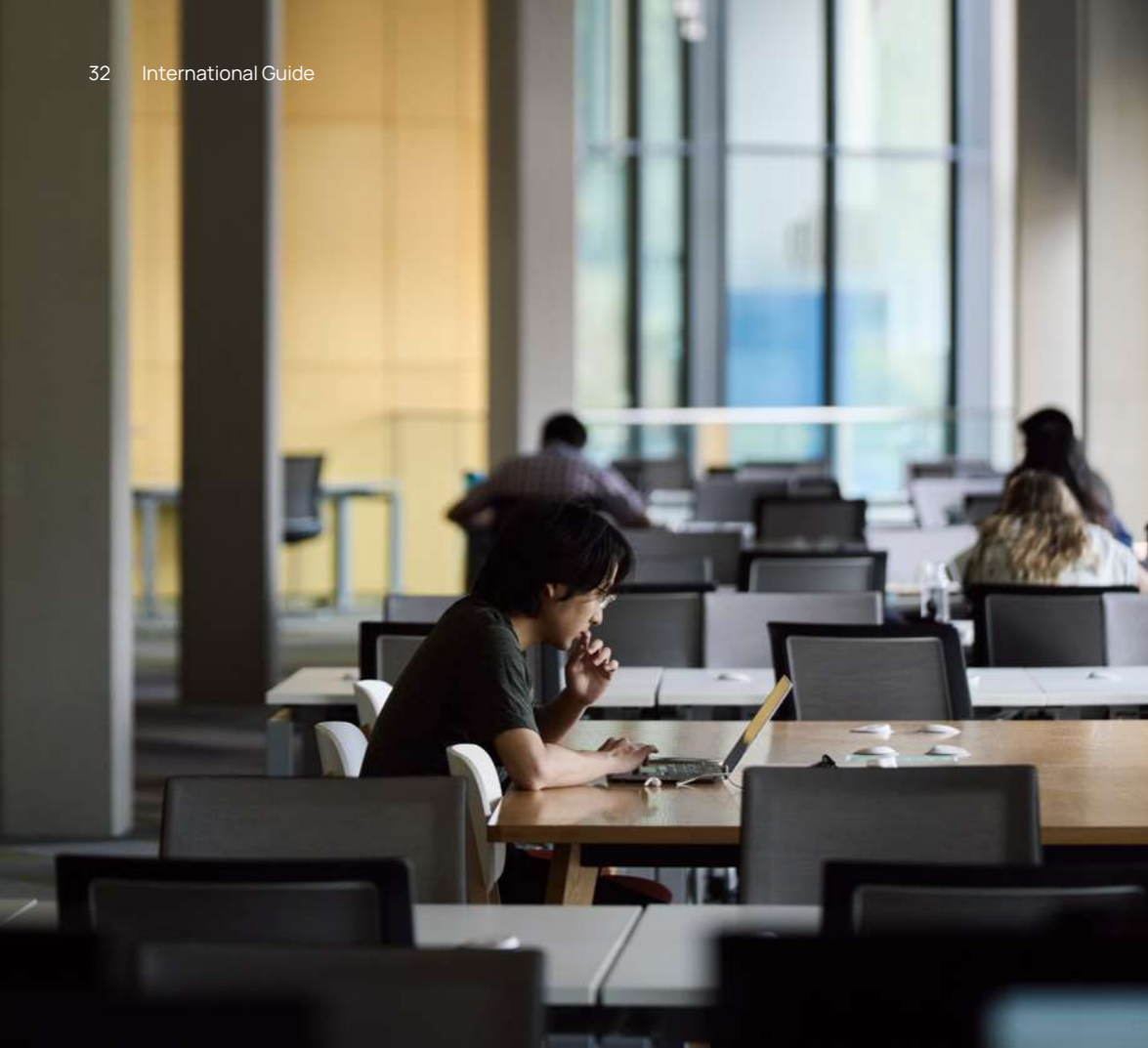
Here, you can live close to the city and our main campus. There is a choice of accommodation for both postgraduate and undergraduate students. Only 10 minutes from the university, Pritchatts Park is near to a range of local amenities and transport links that take you into the city centre.



Living costs

Expense	University catered accommodation	University self-catered accommodation	Privately rented shared house
Rent <i>(indicative)</i>	£203.50	£137.50	£115 <i>(Indicative plus a refundable deposit of roughly £400-£500 to be paid at the start of the year)</i>
Gas, electricity and water	Included	Included	£32.50 (average on a 4 bed house)
Food	£66 food allowance included + £30 essentials	£80	£80
Toiletries and laundry	£15	£15	£15
Course costs	£25	£25	£25
Insurance <i>(indicative)</i>	Included	Included	£16
Local travel	£30	£30	£30
Social/memberships	£55	£55	£55
Clothing	£20 - £30	£20 - £30	£20 - £30
Internet and mobile phone	£12	£12	£12
Weekly Total	£426.50	£374.50	£400.50
Annual Total	£20,472	£17,976	£19,224





Teaching quality and support

Grow as a person, develop your ideas, expand your opinions and achieve your full potential. We'll encourage you to become an independent and self-motivated learner.

What study support will you receive?

To help you settle in, we'll assist, inspire and encourage you with a complete system of support.

- As well as your personal tutor, we have welfare tutors and wellbeing officers based in your school and department to help with any academic and welfare concerns.
- The Academic Skills Centre helps to boost your academic writing, mathematical and general academic skills, including workshops, online self-help tutorials and one-to-one appointments with specialist advisors.
- Birmingham International Academy provides language support for all international students while they study; ranging from workshops and lunchtime classes to individual appointments and online learning.

Our learning facilities

Our lectures and seminars are inspiring learning experiences. Here, you'll develop your ideas through dialogue and debate with your tutors and fellow students.

Free to choose your own way of studying, our library and archives combine traditional methods with e-resources and digital collections. In modern, purpose-built surroundings, such as research and teaching labs, you'll work with expert teams who'll help you explore all the tools on offer.

At our main library and adjacent Teaching and Learning Building, you'll find a variety of facilities from collaborative learning spaces to silent study rooms.

Careers mentoring

Enjoy one-to-one advice from an expert working in the area you're interested in. It's a great way to learn how to succeed, or simply prepare yourself for the workplace. With practical advice on employability and more, our mentors love sharing their wisdom.

Learn more about the Careers Network Mentoring Scheme:
birmingham.ac.uk/careersmentoring

Student mentors

Planning to live in university-owned or partner accommodation? Our Student Mentors are here to help. Available during term-time, they'll support you with any financial, academic, shared living or personal challenges you might face.

Discover more:
birmingham.ac.uk/student-mentors

Here for you 24/7

Our international student community is vibrant and diverse. So, we've created a range of student services to make sure everyone gets the help they need. The Aston Webb Student Hub brings it all together in one place. Online, you can access it through Student Help.

Ask our students

Any questions about life at Birmingham? Get advice from our current students who are happy to help you.

Ask a postgraduate student:
birmingham.ac.uk/postgradchat

Ask an undergraduate student:
birmingham.ac.uk/chat

Supporting you during your studies

Your health and wellbeing are our number one priority while you're here. That's why we offer a range of services to support you at every stage of your journey.

Welcome Week

To help you settle in and feel at home, we run a welcome programme at the start of every September. As well as tours of the city and our campus, we also host a range of social events to help you make new international friends.

A safe, friendly campus

On the edge of the city in the leafy suburb of Edgbaston, our campus is safe, secure and welcoming to all. Our on-site security team will keep you safe, both on campus and in our accommodation. With everything monitored on CCTV, we also work closely with the local police, while our own Community Police Officer is based right here on campus.

Practicing your faith

Our Multi-Faith Chaplaincy is open to students of all faiths and those who have none. It's a place where everyone's welcome, whether you're meeting for worship, relaxing in the Oasis Lounge or joining one of our established societies and groups.

Putting your wellbeing first

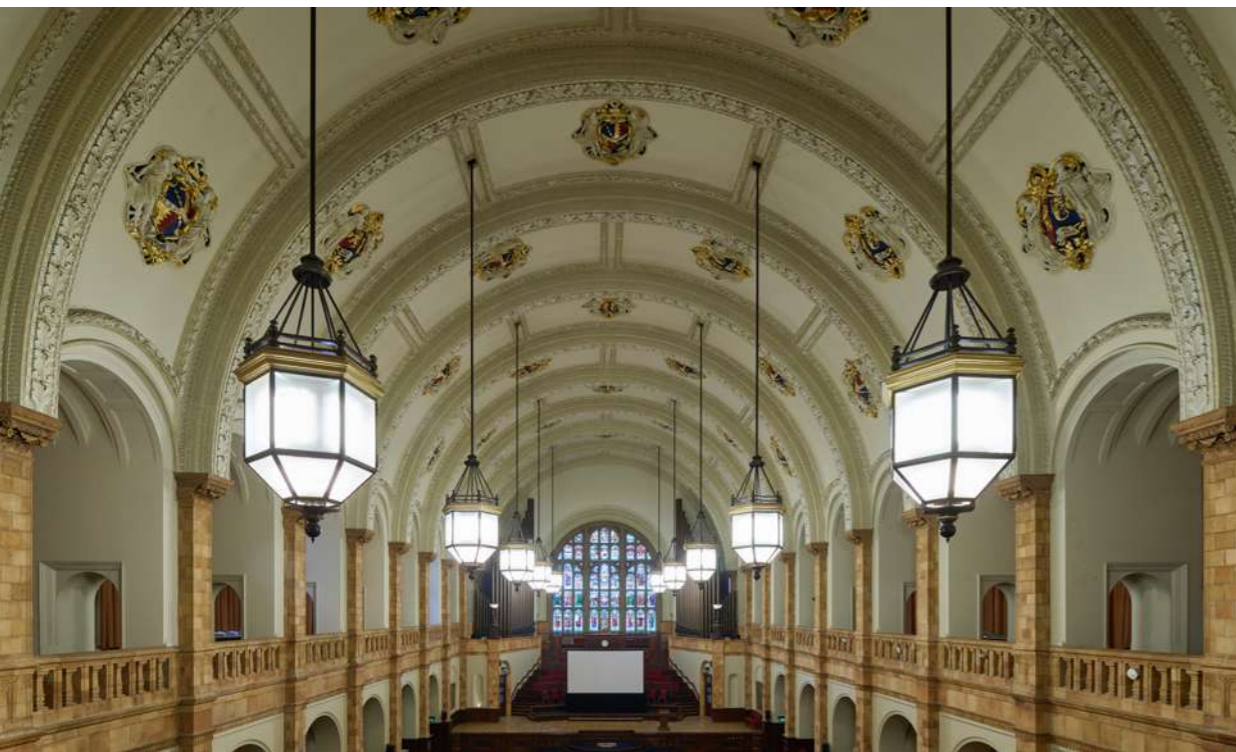
Our Wellbeing Centre helps our students stay happy and healthy. Our dedicated team of professional counsellors offers individual, group and online support whenever you need it.

The Guild of Students' Guild Advice service also offers free, independent advice. From money and academic issues, to employment, housing, immigration and more. It's a friendly, professional service for all.

Disability support

We want everyone in our inclusive community to have the best possible experience. So, please let us know if you have a disability and how we can support you. We'll then make any adjustments you need.

Our Student Disability Service offers professional support to students with disabilities, including long-term health conditions, mental health difficulties and specific learning disabilities such as dyslexia. Don't worry, telling us about a disability won't affect your academic course admission. On top of helping you access disability funding, we want you to enjoy life here to the full.



Study with us in Dubai

Be part of the Birmingham community, while living in the global city of Dubai. We offer a range of foundation, undergraduate and postgraduate programmes. Meaning you can enjoy an education from us, in the Emirates.

A fast-growing international hub for education, our Dubai campus offers the same innovative learning experience as our UK campus. Taught and accredited to the same standards, you'll learn from academics who are experts in their fields. As well as thought-leaders who shape policy, influence society and change lives around the world.

State of the art campus

Since opening in 2021, our Dubai campus has helped to accelerate the progress made in Dubai International Academic City. Home for up to 2,900 students, it's a thriving community for Birmingham alumni in the region. There are student housing options within walking distance and further away, looking across parkland inspired by the Green Heart design of our UK campus.

Grow your global connections

Where traditional souks meet state-of-art-malls, Dubai also boasts thriving art and festival scenes, giving you a truly rich student experience. Depending on academic performance, UK students can travel to the UAE and study alongside their Dubai peers. Likewise, as a student based in Dubai, you can choose to move to the UK for up to a year.

If you're studying away from your family home, you'll find our relaxed, comfortable and secure student communities provide many home comforts. With options to suit a range of budgets, you'll have easy access to gyms, games rooms, outdoor cinema and social spaces.



All the space you need

Our Dubai campus is an innovative space that lets you get the most from our teaching and world-leading research.

In Dubai, you'll benefit from best-in-class facilities, forward-thinking staff, a tech-driven environment and a wealth of industry partnerships. Together, we drive innovation, preparing you with the skills, knowledge and expertise to help you thrive in the job markets of tomorrow.

Designed with sustainability at its heart, our dedicated 'hub' puts all student services in one space, while sheltered courtyards and social spaces offer a place to relax. From large lecture theatres and laboratories to smaller seminar and tutorial rooms, our Dubai campus delivers a world-class experience for all.



Study with us in Dubai:
birmingham.ac.uk/dubai

Contact us

Admissions enquiries:
admissions.bham.ac.uk

Specific information for your country or region:
birmingham.ac.uk/country

Study Abroad enquiries:
incomingstudyabroad@contacts.bham.ac.uk

Birmingham Foundation enquiries:
bia-fp-admin@contacts.bham.ac.uk

We are the only campus based university in the UK to have our own railway station – 'University'. Regular trains will take you from Birmingham New Street to campus in seven minutes, making trips to and from the city and Birmingham International Airport quick and simple.



Designed and printed by



UNIVERSITY OF
BIRMINGHAM

Creative
Media

Edgbaston, Birmingham,
B15 2TT, United Kingdom
birmingham.ac.uk