

Undergraduate prospectus 2026/27

No limits on what you can do



Teaching
Excellence
Framework



UNIVERSITY OF
GREENWICH

Contents



04	Vice-Chancellor's welcome
06	Why study at the University of Greenwich?
08	Study in a great location
10	How will I pay for uni?
12	Your student support
14	Your career
16	Your student life

20	Accommodation
22	International students
24	Greenwich Campus
26	Avery Hill Campus
28	Medway Campus
30	We love south London
32	We love Kent
34	Meet our alumni

38	Your green future
40	Explore your subject
42	Faculty of Education, Health and Human Sciences
48	Faculty of Engineering and Science
58	Faculty of Law, Arts and Social Sciences

66	Greenwich Business School
72	Our UK partner colleges
74	How to apply
76	Open Days
78	Our history, your story
80	An important note

Vice-Chancellor's welcome



Thank you so much for considering studying at the University of Greenwich. We seek to be a supportive, friendly community of staff and students who are deeply committed to student success, sustainability, and inclusivity. Our academics are as passionate about teaching as they are about their subject. We were proud to achieve Gold in the Teaching Excellence Framework (TEF) 2023 in recognition of our commitment to providing our students with the best possible experience. Whatever your background, whatever your story, we will help you achieve your goals and reach your full potential. And we will be with you every step of the way."

A handwritten signature in black ink, reading "J. Harrington", written in a cursive style.

Professor Jane Harrington
Vice-Chancellor and CEO,
University of Greenwich

Why study at the University of Greenwich?

You'll join a place where **you can belong, learn, be supported and thrive**. Whether you come from the other side of the world or from around the corner, **you'll soon feel at home within our super-friendly community**. And you can count on us to be there for you throughout your time with us and after graduation, **helping you to be the very best version of you**.



No3
London
university
overall

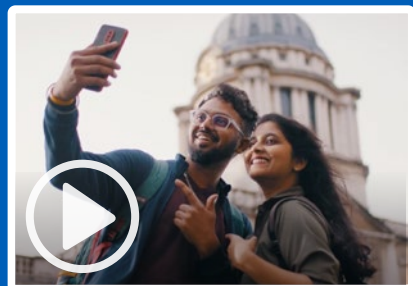
As voted for by
our students

No2
London
university
for Students' Union

(StudentCrowd University
Awards 2024)

No2
London
university
for **sustainability**

Times Higher Education
Impact Rankings 2024



A place to belong

Take a look at our welcoming uni community that celebrates you and gives you the confidence to live your best life.



An easy commute

What's it really like to live at home and travel to uni? Hear from some of our commuter students.



Teaching
Excellence
Framework

The quality of our
teaching has been
rated **Gold**.

**A top 20
university
in the UK**

for **social mobility**

(English Social Mobility
Index 2024)



Greenwich has such a diverse community. There's lots of people so you'll always find someone going through a similar experience as you."

Israela Okatch, psychology student

Study in a great location

It's easy to get to our campuses from central London by train, coach and London's public transport network.

All campuses have **excellent transport links** with the rest of the UK, great for when you want to get out and about.



London

Greenwich Campus
Avery Hill Campus

Medway Campus

Kent

University bus services connect our three campuses*

*Free service between Avery Hill and Greenwich; fee applies for Medway service to Avery Hill/Greenwich

London airports with direct train routes to central London

London Heathrow >>> 15 minutes

London Gatwick >>> 30 minutes

Our **Commuter Bursary** could help with your travel costs. Check our website to see if you're eligible.

How will I pay for uni?

There are many ways we can help you fund your studies, including scholarships, bursaries and a hardship fund. Here is some of the funding we offer*. You can also get paid work at the university while you're a student.



Fees and funding made easy

A quick guide on how to pay for uni and apply for student finance**. If you're an international student, please visit gre.ac.uk/international.

Scholarships and bursaries

Essentially, scholarships and bursaries are free money because unlike student loans they don't have to be paid back. Here are just some that we offer*.

Up to
£1,000

towards travel costs with our
Commuter Bursary.

Up to
£2,000

for local students through our
GREat Skills Scholarship

£700

towards your student
accommodation with our
Accommodation Bursary.

£1,500

for care leavers through our
Care Leaver Bursary.

Cost-of-living support

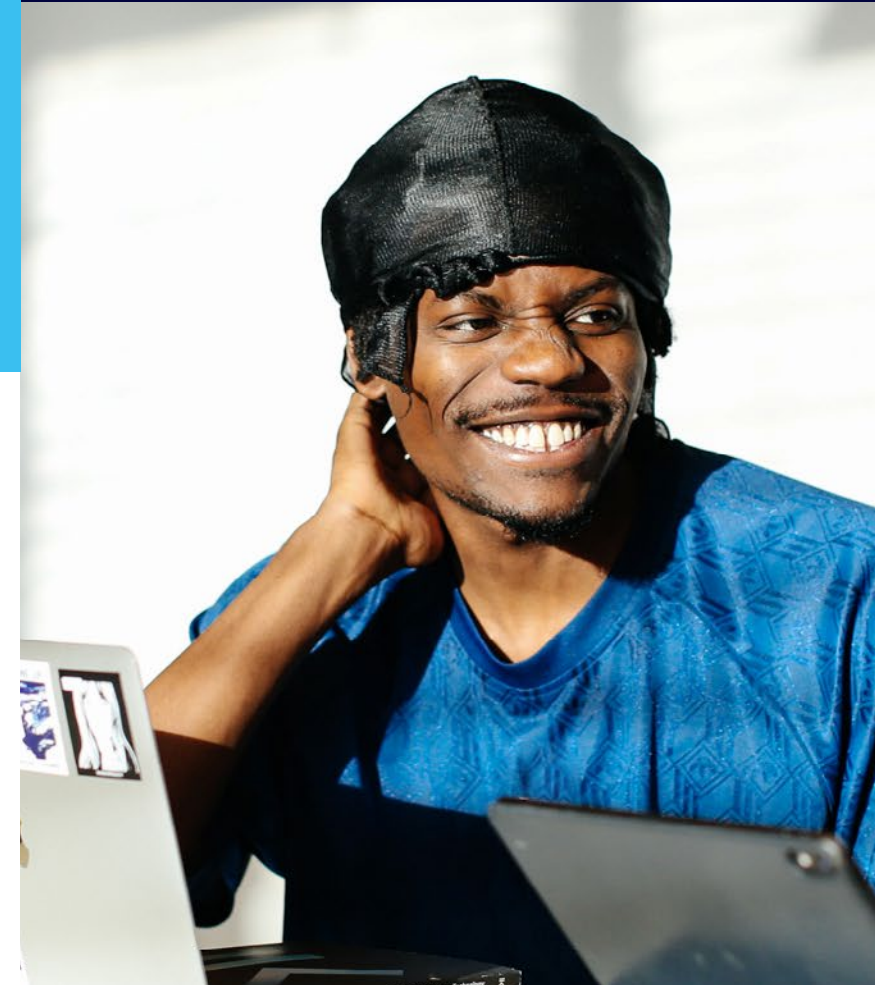
Lots of help, including **food vouchers**, energy bill support and **money advice**.

*Please see our website for up-to-date information and eligibility criteria.

**This information is for UK students and for 2024/25 entry, so the available bursaries and scholarships, as well as the figures shown, are subject to change.

Earn while you learn

You can get paid work at the university. We employ over 600 students each year through our Student Ambassador Scheme and JobShop. See page 14 to find out more.



Take me to
cost-of-living support



Take me to
scholarships and bursaries



Your student support

Make the most of your time at university, knowing that whatever you may need, we're here for you.

By your side

Need someone to talk to? You can count on our mental health and psychological wellbeing coordinators, counsellors and chaplains.

Specialist support

Our **expert advisers** can assist you if you have a disability or a specific learning difficulty, such as dyslexia.

Good health

You can join a local practice – we have a list of GP surgeries we work closely with. Let us know if you need help to register.

Extra study skills

You can build on the support from your personal tutor with our skills workshops and drop-in sessions.

Money wise

We can help you **manage your money** and find part-time work for extra funds.

Safe and sound

Our security teams and resident assistants are here for you. You can also download **SafeZone**, a personal safety app to put you in touch with emergency assistance.

Should you experience any harassment, our Report + Support portal will take you through your next steps. [Learn more](#) about what we're doing to prevent harassment and sexual misconduct.

Your wellbeing matters

Meet our dedicated support team and hear about how they help students with the different challenges they face.



Greenwich cares

Care leaver Kevin says he had everything he needed before he joined and during his time with us, thanks to our specialist support.



Your career

You'll get much more than a degree with us. We'll help you **build the workplace skills** and experience you need to **achieve your career ambitions**. You can count on us to be **by your side** throughout your university journey and beyond.

Here's how.

- 1** Paid work at the university with flexible hours that fit around your studies
- 2** Career support and advice, including one-to-one sessions
- 3** Placement and internship opportunities with a range of employers
- 4** Mentoring from professionals who work in industry
- 5** Career fairs where you can meet employers and find out about graduate roles
- 6** Help for entrepreneurs, including our annual Enterprise Challenge competition.



The confidence I gained during my placement at the university gave me the boost I needed to enter the job market. It helped me secure my graduate role at Barclays. I wouldn't have got to where I am without it."

Ingrid Ionita, Technology Analyst, Barclays, advertising and marketing graduate

We prepare you to be **curious** and **true to yourself**, with the **confidence** to **realise your ambitions**:

- Be an impactful change-maker
- Be a real-world problem-solver
- Be a highly skilled professional



I chose this university because Greenwich Campus is used a lot as a filming location, and I hoped that I could be part of it in some way. And it turned out I could! Our lecturers told us about opportunities to get involved so I got to work as a runner, shadowing crew members on the Bridgerton film set."

Sanjay Pandey, Senior Digital Content Officer, University of Greenwich, film production graduate



What our students say

Three of our students share their views on their placement experiences at the O2, Charlton Athletic and City Cruises UK.

Take me to your careers service



Your student life

Whatever you're into, you'll find lots to keep you entertained outside of your studies and **people from all walks of life** to connect with. When you join us, you'll automatically become a member of our hugely active **Greenwich Students' Union**. As well as being your voice on important matters, they run **loads of events and socials** across all our campuses, so you can **do more of what you love**.

140+

student societies and sports clubs



I'm a pretty shy person, so when I meet people, I don't really talk much. But in those first few weeks at uni I went to events and joined societies. It was a great way to meet people as you can bond over something you really enjoy. It's how I met one of my best friends."

Anuhasee Jayawardena, advertising and digital marketing communications student



My favourite place on Greenwich Campus is Dreadnought. There's always something going on like society events or celebrations. It's great for meeting new people. I loved getting on the catwalk for Global Greenwich fashion show."

Abhiram Satheesh, marketing management graduate



Find your tribe

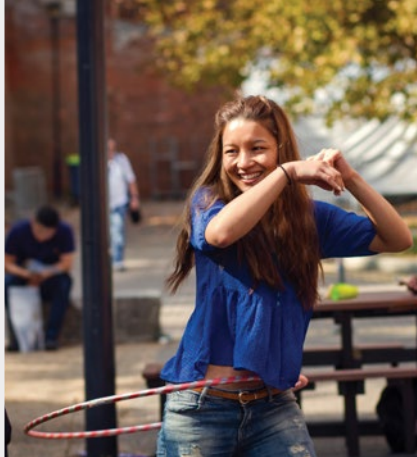
Explore your passions, try something new and meet like-minded people within our student societies and sports clubs.

Take me to Greenwich Students' Union



We have something for everyone!

You can join **Team Greenwich** and get stuck into your favourite sport or discover a new one. There are also lots of special interest groups and societies, from **Anime** and **Chess** to **Formula 1** and **The Debate Society**.

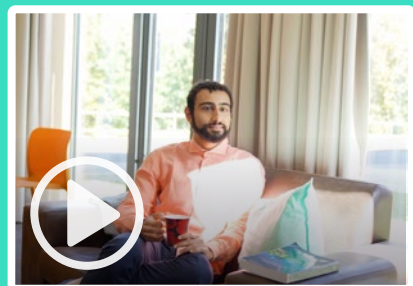


Accommodation

5 reasons to choose our student halls

- 1 Halls on campus or just a short walk away
- 2 Social events in halls to meet new friends
- 3 Parking at Avery Hill and Medway*
- 4 24/7 security and residential support
- 5 Free internet and Wi-Fi

*Fee applies



Your home from home

Get the need-to-knows about university accommodation and come look inside a typical student flat.

We **guarantee** a place in halls for most new full-time students who meet a few simple criteria.

See our website for full details.

Explore our halls



Avery Hill

In the Student Village, with facilities on your doorstep, including a great on-campus gym that's free for residents.



Greenwich

In the heart of town and a short walk from campus, where you'll also find a fabulous gym that's free for residents.



Medway

Spacious flats with plenty of storage, just a couple of minutes' walk from your studies and the on-campus gym.



SafeZone

We prioritise your safety at all times. That's why we offer **SafeZone**, a free app you can download. With just a tap, you can quickly connect with on-campus first-aiders, security, or emergency response teams whenever needed.

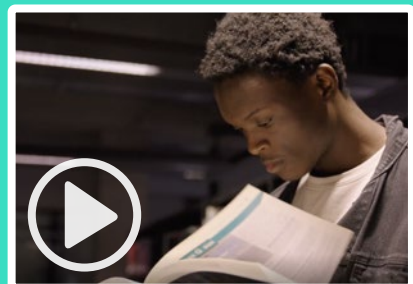


Looking for a place to rent?

If you want to live in a local house, flat or lodgings, we can point you in the **right direction**.

International students

You can look forward to a very warm welcome at our university, where **you'll join a diverse, supportive community** of students from over 140 countries. It's easy to make friends too as there are **lots of student-run clubs and societies**, as well as a packed events calendar. Turn to page 16 for more about the social side of student life.



Meet our students
Discover what they love about studying here and why Greenwich is great for international students.

International Scholarship Award

worth up to
£3,000
in your first year*

EU Bursary
worth up to
£3,000
each year*

I love Greenwich. It has the most beautiful campus in London. I also love the diversity here. There is a huge number of international students from different countries.”

Abdul Rahman, computer science student



5 reasons to choose Greenwich

- 1 A home from home**
Our students come from all over the world and all our accommodation is open to international students.
- 2 Specialist advice**
We'll support you with your application, help you prepare for your arrival and direct you to experts to assist with your student visa.
- 3 Financial assistance**
We offer scholarships, bursaries and an instalment plan for eligible international students.
- 4 Easy qualifications check**
We accept many qualifications, including those from over 80 countries listed on our online guide.
- 5 English language support**
If you need to improve your English, you can take our web-based course from home or study our pre-sessional English classes on campus.

Ready to apply?

Check page 75 to see how to apply. You'll find the tuition fees for the course you're interested in and the different ways to pay on our website.

Greenwich Campus

Enter one of the most unique settings in the UK. This campus sits in the heart of a UNESCO World Heritage Site and is a favourite filming location for blockbuster movies and TV shows. But it's much more than a pretty face.

You'll love chilling with your mates in Dreadnought Building. With a café, basement bar and a huge atrium area, it's the place to be and there's always something going on – Wavey Wednesday is a big hit with our students.



Campus tour with Luna

Take a look around the place with student Luna and get a taste of the Greenwich Campus vibe.

“As soon as I saw pictures of the campus, I knew this was where I wanted to study, and I am happy I made that choice.”

Judit Plein, marketing graduate



Avery Hill Campus

You'll get the best of both worlds here – a campus university experience where you're surrounded by students and the buzz of central London isn't far. With teaching spaces and accommodation all on-site, it's like being in a student village.

The heart of the village is the Dome. You can grab a bite to eat, play some pool and hang out with friends in the chill-out areas. If you're serious about sport, you'll love our two professional all-weather pitches and five-court sports hall.



Campus tour with Hannah

Take a peek inside the Dome, student flats, our specialist health labs and sports facilities.



Green living

See the amazing fruit and veg students and staff grow and harvest in our edible garden.



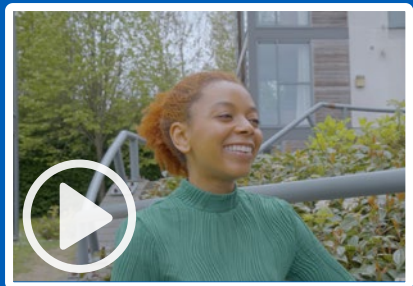
“I was drawn to the peacefulness of the campus. It's such a beautiful part of London and gives you the option to go into the centre for fun without the London bustle surrounding you constantly.”

Verity Lancaster, midwifery graduate

Medway Campus

Get ready to fall in love with our redbrick campus in Kent. Lecture theatres, labs and the library are minutes away from student halls. You can literally roll out of bed minutes before your first lecture of the day.

You don't have to venture far when you want to party either. The Hub building is home to the Students' Union and Deep End Bar, which hosts fun events, activities and club nights throughout the year.



Campus tour with Jessica

Explore this beautiful site and see our teaching facilities, on-site accommodation and Deep End Bar.



University bus service to **Greenwich** and **Avery Hill** Campuses*

*Fee applies



I'm really at home at Medway. It's become my second home. I have made great friends and there's always places to explore nearby."

Ojo Onuh, pharmaceutical sciences student

We love south London

Greenwich Campus

10 minutes by train to central London

Nearby:

Design District



Creative industry hub that's home to Bureau Restaurant, Canteen Food Hall & Bar

Canary Wharf



Financial district with 100s of shops, bars and restaurants

Cutty Sark



Greenwich Park



One of London's eight Royal Parks

Avery Hill Campus

30 minutes by train to central London

Around the corner:

Charlton Athletic FC Training Ground



Avery Hill Park



Nearby:

The O2



Concert hall, cinema, shopping, bars, cafés and restaurants

Eltham High Street

Shops, bars, restaurants and six-screen cinema

Severndroog Castle



Eltham Palace and gardens



Greenwich Campus

Avery Hill Campus

Around the corner:

Greenwich Market



Greenwich Theatre

National Maritime Museum



Greenwich town centre

Shops, cafés, bars, restaurants and cinema

We love Kent

Medway Campus

45 minutes by train to central London

Around the corner:

Historic dockyards



Multiplex cinema



Dockside Shopping Outlet



Medway Campus

Nearby:

Bluewater Shopping Centre



Rochester Castle



Rochester



Historic town centre

Kent beaches




Including Whitstable, Margate and Broadstairs

Canterbury Cathedral



Meet our alumni

Our connection with our students doesn't end at graduation. We have **297,000 alumni across the world** who are part of our **Greenwich community**. As a student, you'll have the opportunity to reach out to alumni for mentoring and advice and to grow your professional networks. **Our alumni are here to help and inspire you.**

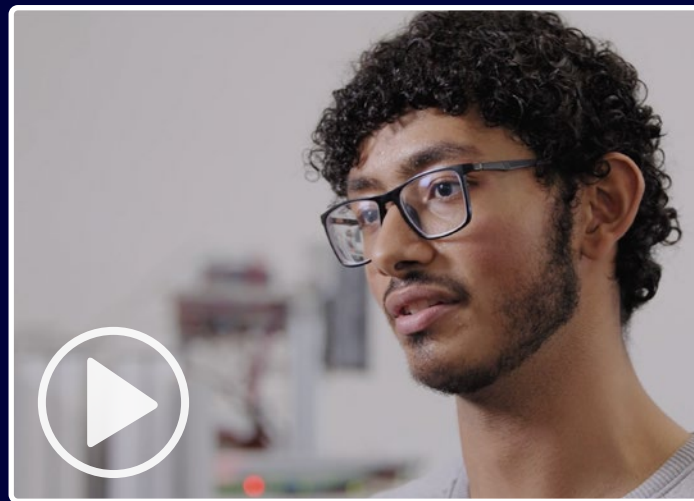
 Greenwich will always hold a special place in my heart, so doing what I can to shine a spotlight on the university or to help its students will always be at the top of my agenda. I want to see the future leaders of tomorrow thrive and prosper. If I can help be a part of that, then that would make me happy.”

Byron Cole, bestselling author, keynote speaker, mentor and trainer, Business Economics BSc Hons, 2008



“The lecturers always had your back and their door was always open. Their support helped me choose the right career path for me. I decided in my second year that I didn’t want to be a solicitor or barrister, and they gave me great advice.”

Lauren Garrett, Project Coordinator, Pinsent Masons, Law LLB Hons, 2018



First-class experience

Samer Abreek shares how his degree helped him secure a job at Siemens as soon as he graduated.

“[Greenwich] students never fail to impress me. They’ve all got the same hard-working go-getter attitude that you just don’t see in a lot of places. I’m really inspired by that.”

Henry Setter, Advice Manager, Imperial College Union, Psychology BSc Hons, 2018

[Learn more about our alumni](#)



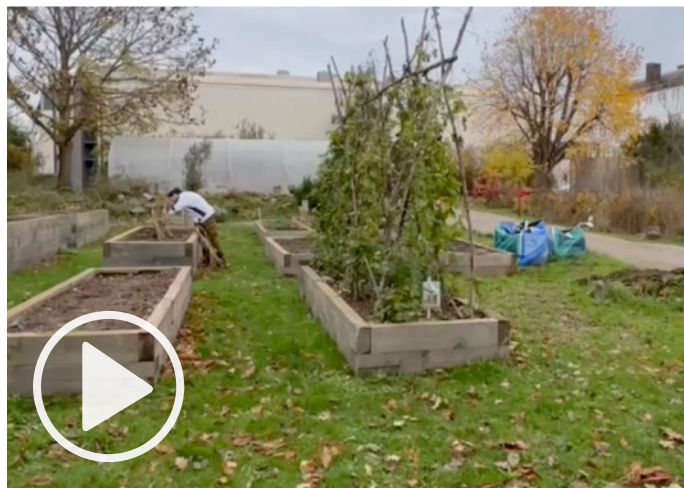
“For me, what makes the University of Greenwich special is that they pick such great people – not just as students but support staff and lecturers. My lecturers and the employability team gave me the confidence to get my sandwich placement at Intel. My time there made me realise that I wanted to work in industry.”

Rachel Dickinson, BI Strategy Manager, Lloyds Banking Group, Mathematics BSc Hons, 2016



Your green future

We care deeply about the future of our planet, which is why sustainability sits at the heart of our teaching and community. A growing number of our courses include sustainability content, and we have many activities and projects around the university that you can get involved in. Together we can create a greener, more sustainable world.



5 green tips from Amelia

Even small everyday choices can help tackle climate change. Amelia shares five ways that she's doing her bit for the planet.

Here are some of the ways Greenwich is going greener.

6.7

hectares (equivalent to nine football pitches) of **natural land** across our campuses, where we have recorded over 250 animal species, including 25 listed as vulnerable.

260

solar panels installed across our campuses.

2

electric inter-campus buses. We're one of the **first** UK universities to offer this service.

6,500

bags of items donated through our end-of-term reuse campaign since 2018, raising over **£92,500** for the British Heart Foundation. If people buy these used clothes instead of new ones, it avoids over 376 tonnes of carbon from being emitted.

60%

is how much we decarbonised our Avery Hill Campus by replacing our gas heating network with an air source heat pump networked system.



See our courses with [sustainability content](#)



Take me to [a greener future](#)



Explore your subject

Learn about our faculties and see a **list of courses** on the following pages. You can also find out more about our subjects on our **website**.

- | | | | |
|--|--|---|---|
| Accounting and finance | Education studies | International relations | PE, sport and exercise science |
| Architecture | Engineering | Landscape architecture | Pharmaceutical science |
| Biology and biomedical science | English | Law | Pharmacy |
| Business and management | Film, media and sound | Logistics and supply chain management | Psychology |
| Computer science | Forensic science | Marketing and advertising | Public health |
| Criminology | Games development | Mathematics | Science |
| Design | Health and social care | Midwifery | Social work |
| Drama | History | Nursing | Sociology |
| Early years studies | Human nutrition and health | Paramedic science | Teacher training |
| Economics | Human resources | | Tourism, hospitality and events |



Faculty of Education, Health and Human Sciences

Like you, our tutors and lecturers want to improve people's lives and serve their communities. As a student, you'll learn from our highly experienced academics and gain the practical skills you need for your chosen career. You'll also have lots of help from us throughout your course.



Meet our students

Hear from our health students and look inside our fantastic teaching facilities.

[Take me to the faculty](#)



Course	Attendance	Campus
--------	------------	--------

Education subjects

Early years studies

Early Years BA Hons	3 years full-time; 4 years part-time	Greenwich
Early Years (Top-up) BA Hons	1 year full-time; 2 years part-time	Greenwich
Working with Vulnerable Children and Families BA Hons**	3 years full-time	Greenwich; Avery Hill***

Education studies

Primary Education Studies BA Hons*	3 years full-time	Avery Hill
---	-------------------	------------

PE, sport and exercise science

Physical Education and Sport BA Hons	3 years full-time; 6 years part-time	Avery Hill
Sport and Exercise Science BSc Hons	3 years full-time; 4 years part-time	Avery Hill

Teacher training

Primary Education with Qualified Teacher Status (5–11) BA Hons	3 years full-time	Avery Hill
Professional Certificate in Education (Further Education and Training) PCE	1 year full-time; 2 years part-time; start Sept or Jan	Avery Hill

Primary Education Studies
BA Hons

91%

of students responded positively
about the teaching on their course

National Student Survey 2024



Look inside our
classrooms and see
what studying with
us is like

Sports science

No 3

London university

Complete University Guide 2025



Speech and language therapy

No 2

London university

Complete University Guide 2025

Health subjects

Health and social care

Health and Social Care (Top-up) BA Hons	1 year full-time; 2 years part-time	Greenwich
Mental Health and Wellbeing BSc Hons**	3 years full-time; 6 years part-time	Greenwich
Operating Department Practitioner BSc Hons*	3 years full-time	Avery Hill
Physiotherapy BSc Hons*	3 years full-time	Avery Hill
Speech and Language Therapy BSc Hons*	3 years full-time	Avery Hill

*Course not open to international students.

**Course will run subject to final approval.

***You will study on our Greenwich Campus and Avery Hill Campus.

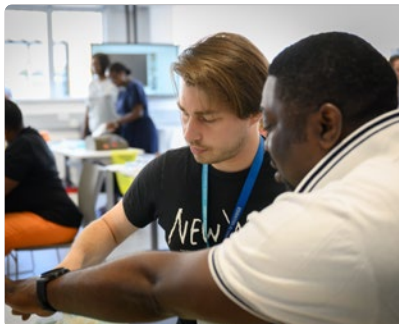
Course	Attendance	Campus
Midwifery		
Midwifery BSc Hons*	3 years full-time	Avery Hill
Midwifery BSc Hons*	3 years full-time	Medway
Nursing		
Adult Nursing BSc Hons	3 years full-time; start Sept or Jan	Avery Hill
Adult Nursing BSc Hons*	3 years full-time	Medway
Children's Nursing BSc Hons*	3 years full-time; start Sept or Jan	Avery Hill
Mental Health Nursing BSc Hons*	3 years full-time; start Sept or Jan	Avery Hill
Mental Health Nursing BSc Hons*	3 years full-time	Medway
Paramedic science		
Paramedic Science BSc Hons*	3 years full-time	Avery Hill or Medway
Psychology		
Business Psychology BSc Hons	3 years full-time; 6 years part-time; 4 years sandwich	Greenwich
Psychology BSc Hons	3 years full-time; 6 years part-time; 4 years sandwich	Greenwich
Psychology (Extended) BSc Hons	4 years full-time; 8 years part-time	Greenwich
Psychology with Counselling BSc Hons	3 years full-time; 6 years part-time; 4 years sandwich	Greenwich
Psychology with Counselling BSc Hons	3 years full-time; 6 years part-time; 4 years sandwich	Medway
Public health		
Public Health BSc Hons	3 years full-time; 6 years part-time	Greenwich
Public Health (Extended) BSc Hons	4 years full-time	Greenwich
Public Health BSc Hons	3 years full-time; 6 years part-time	Medway
Social work		
Social Work BA Hons	3 years full-time; 4 years part-time	Greenwich

Nursing and midwifery

Joint 2nd
London university

for student satisfaction and
graduate prospects

Complete University Guide 2025



“The lecturers are supportive, especially during assessments and creating projects, making you feel as though there is always someone to go to when there is a problem.”

Imogen Aylott-Stephens, speech and language therapy student



Faculty of Engineering and Science

Join us as a student and you'll learn from passionate experts whose work is having an impact in the real world. You'll benefit from our strong research culture, close ties with industry and extensive laboratories. Whether your course is at Medway or Greenwich Campus, we'll prepare you to launch your professional career.



This is my Greenwich

Follow Ojo around campus to find out what a typical day as a science student is like.

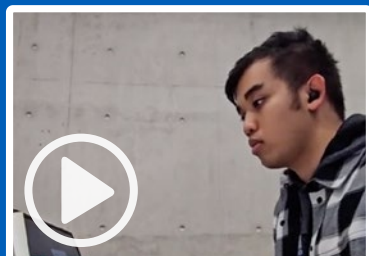
[Take me to the faculty](#)



Course	Attendance	Campus
--------	------------	--------

Computer science, mathematics, and games development subjects

Computer science



A day in the life of a computer science student.

Business Computing BSc Hons	3 years full-time; 6 years part-time; 4 years sandwich	Greenwich
Computer Science BSc Hons	3 years full-time; 6 years part-time; 4 years sandwich	Greenwich
Computer Science (Artificial Intelligence) BSc Hons	3 years full-time; 6 years part-time; 4 years sandwich	Greenwich
Computer Science (Cyber Security) BSc Hons	3 years full-time; 6 years part-time; 4 years sandwich	Greenwich
Computer Science (Data Science) BSc Hons	3 years full-time; 6 years part-time; 4 years sandwich	Greenwich
Computer Science (Games) BSc Hons	3 years full-time; 6 years part-time; 4 years sandwich	Greenwich
Computer Science (Networking) BSc Hons	3 years full-time; 6 years part-time; 4 years sandwich	Greenwich
Computing BSc Hons	3 years full-time; 6 years part-time; 4 years sandwich	Greenwich
Computing (Extended) BSc Hons	4 years full-time; 5 years sandwich	Greenwich
Computing (Artificial Intelligence) BSc Hons	3 years full-time; 4 years sandwich	Greenwich
Computing (Data Science) BSc Hons**	3 years full-time	Greenwich
Computing (Information Systems) BSc Hons	3 years full-time; 6 years part-time; 4 years sandwich	Greenwich
Computing (Network Systems) BSc Hons	3 years full-time; 6 years part-time; 4 years sandwich	Greenwich
Computing for Emerging Technologies BSc Hons	3 years full-time; 6 years part-time; 4 years sandwich	Medway
Cyber Security and Digital Forensics BSc Hons	3 years full-time; 6 years part-time; 4 years sandwich	Greenwich
Data Science BSc Hons	3 years full-time; 6 years part-time; 4 years sandwich	Greenwich
Software Engineering BEng Hons	3 years full-time; 6 years part-time; 4 years sandwich	Greenwich

Games development

Games Development BSc Hons	3 years full-time; 6 years part-time; 4 years sandwich	Greenwich
-----------------------------------	--	-----------

Business Computing **BSc Hons**

97%

of students responded positively about the teaching on their course

National Student Survey 2024



Follow Iasmina's journey from student to games industry professional

Games Design and Development **BSc Hons**

95%

of students responded positively about the teaching on their course

National Student Survey 2024



Course	Attendance	Campus
Mathematics		
Financial Mathematics BSc Hons	3 years full-time; 6 years part-time; 4 years sandwich	Greenwich
Mathematics BSc Hons	3 years full-time; 6 years part-time; 4 years sandwich	Greenwich
Mathematics and Computer Science BSc Hons	3 years full-time; 6 years part-time; 4 years sandwich	Greenwich
Statistics and Data Analytics BSc Hons	3 years full-time; 6 years part-time; 4 years sandwich	Greenwich

Engineering and construction subjects

Chemical engineering		
Chemical Engineering BEng Hons	3 years full-time; 6 years part-time; 4 years sandwich	Medway
Chemical Engineering (Extended) BEng Hons	4 years full-time; 8 years part-time; 5 years sandwich	Medway
Chemical Engineering with Industrial Placement BEng Hons*	5 years part-time	Medway
Civil engineering		
Civil Engineering BEng Hons	3 years full-time; 6 years part-time; 4 years sandwich	Medway
Civil Engineering (Extended) BEng Hons	4 years full-time; 8 years part-time; 5 years sandwich	Medway
Civil and Construction Engineering BSc Hons**	3 years full-time; 6 years part-time	Medway
Civil and Construction Engineering with Industrial Placement BSc Hons**	4 years sandwich	Medway
Computer engineering		
Computer Engineering BEng Hons	3 years full-time; 6 years part-time; 4 years sandwich	Medway
Computer Engineering (Extended) BEng Hons	4 years full-time; 8 years part-time; 5 years sandwich	Medway

Mathematics
BSc Hons

96%

of students responded positively
about the teaching on their course

National Student Survey 2024

“Advanced modules, supportive faculty, dedicated staff, and the enriching environment of London all made the University of Greenwich the ideal choice.”

Priyanka Hosamane Vasantha, software engineering student



“I find myself supported and confident to do and aim for things I would have never thought myself capable of achieving.”

Maria Lupi Jimenez, engineering student

Course	Attendance	Campus
Construction		
Construction Management BSc Hons	3 years full-time; 5 years part-time; 4 years sandwich	Greenwich
Occupational Safety, Health and Environment (Top-up) BSc Hons	2 years part-time (by distance learning); start Sept or Jan	Greenwich
Quantity Surveying BSc Hons	3 years full-time; 5 years part-time; 4 years sandwich	Greenwich
Electrical and electronic engineering		
Electrical and Electronic Engineering BEng Hons	3 years full-time; 6 years part-time; 4 years sandwich	Medway
Electrical and Electronic Engineering (Extended) BEng Hons	4 years full-time; 8 years part-time; 5 years sandwich	Medway
Embedded Electronic Systems Design and Development BEng Hons	5 years part-time	Medway
Systems Engineering BSc Hons**	3 years full-time; 6 years part-time; 4 years sandwich	Medway
Engineering technology		
Electrical and Electronic Engineering Technology BEng Hons	3 years full-time; 6 years part-time; 4 years sandwich	Medway
Mechanical Engineering Technology BEng Hons	3 years full-time; 6 years part-time; 4 years sandwich	Medway
Mechanical engineering		
Mechanical Engineering BEng Hons	3 years full-time; 6 years part-time; 4 years sandwich	Medway
Mechanical Engineering (Extended) BEng Hons	4 years full-time; 8 years part-time; 5 years sandwich	Medway

Science subjects

Biology and biomedical science		
Applied Biomedical Science BSc Hons	4 years sandwich	Medway
Biology BSc Hons	3 years full-time; 4 years sandwich	Medway
Biology (Extended) BSc Hons	4 years full-time; 5 years sandwich	Medway
Biomedical Science BSc Hons	3 years full-time; 4 years sandwich	Medway
Biomedical Science (Extended) BSc Hons	4 years full-time; 5 years sandwich	Medway

Course	Attendance	Campus
Forensic science		
Forensic Science BSc Hons	3 years full-time; 4 years sandwich	Medway
Forensic Science (Extended) BSc Hons	4 years full-time; 5 years sandwich	Medway
Forensic Science with Industrial Placement BSc Hons	4 years sandwich	Medway
Forensic Science with Criminology BSc Hons	3 years full-time; 4 years sandwich	Medway
Forensic Science with Criminology (Extended) BSc Hons	4 years full-time; 5 years sandwich	Medway
Forensic Science with Criminology and Industrial Placement BSc Hons	4 years sandwich	Medway
Forensic Toxicology BSc Hons	3 years full-time; 4 years sandwich	Medway
Human nutrition and health		
Human Nutrition and Health BSc Hons	3 years full-time; 4 years sandwich	Medway
Human Nutrition and Health (Extended) BSc Hons	4 years full-time; 5 years sandwich	Medway
Pharmaceutical science		
Pharmaceutical Sciences BSc Hons	3 years full-time; 4 years sandwich; 4 years blended learning	Medway
Pharmaceutical Sciences (Extended) BSc Hons	4 years full-time; 5 years sandwich	Medway
Pharmacy		
Pharmacy MPharm	4 years full-time	Medway
Pharmacy MPharm with Preparatory Year*	5 years full-time	Medway

Pharmaceutical Sciences
BSc Hons

89%

of students responded positively
about the teaching on their course

National Student Survey 2024



Tim shares his
passion for the
study of life and
what makes us
who we are



“The lecturers are fantastic. They offer so
much support and guidance both personally
and professionally and really get to know
each student. I learned so much.”

Chloe Tebbutt, forensic science graduate

Faculty of Law, Arts and Social Sciences

Study in the heart of historic Greenwich and be part of a dynamic academic community that's bursting with ideas and subject choices. Explore our three schools – Law and Criminology, Design and Creative Industries, and Humanities and Social Sciences – and see how we can help you shape your future. We have great facilities, including film, TV, sound and design studios, a theatre and a moot room.



Define your future

See what subjects we offer and look inside some of our specialist teaching spaces.

[Take me to the faculty](#)



Course	Attendance	Campus
--------	------------	--------

Architecture and landscape architecture subjects

Architecture

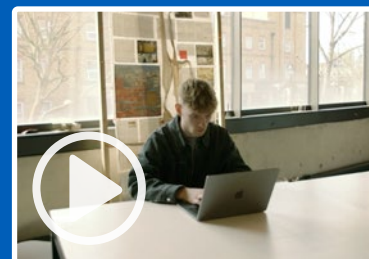
Architecture BA Hons	3 years full-time	Greenwich
Architecture with Foundation Year BA Hons	4 years full-time	Greenwich

Landscape architecture

Landscape Architecture BA Hons	3 years full-time	Greenwich
---------------------------------------	-------------------	-----------



Architecture
No 3
London university
for student satisfaction
and graduate prospects
Complete University Guide 2025



Real talk and
inspiration from
D&D pencil winner
and graphic design
student Louis



Design, drama, and film, media and sound subjects

Design

Animation BA Hons	3 years full-time; 4 years sandwich	Greenwich
Graphic and Digital Design BA Hons	3 years full-time; 4 years part-time; 4 years sandwich	Greenwich
Graphic and Digital Design with Foundation Year BA Hons**	4 years full-time	Greenwich

Drama

Drama BA Hons	3 years full-time; 6 years part-time; 4 years sandwich	Greenwich
Drama and English Literature with International Study BA Hons	4 years full-time	Greenwich
Drama with International Study BA Hons	4 years full-time	Greenwich



"I had the opportunity to do stage
management, directing, writing
– I could get a feel for all the
possibilities in the drama world."

Grace Enever, drama student

Drama
BA Hons

98%

of students responded positively
about the teaching on their course

National Student Survey 2024



Course	Attendance	Campus
Film, media and sound		
Film and Television Production BA Hons	3 years full-time; 4 years sandwich	Greenwich
Film Studies BA Hons	3 years full-time; 6 years part-time; 4 years sandwich	Greenwich
Media and Communications BA Hons	3 years full-time; 6 years part-time; 4 years sandwich	Greenwich
Music and Sound Production BA Hons	3 years full-time	Greenwich



See our students' best work in this film and TV production showreel

Media and Communications **BA Hons**
89%
 of students responded positively about the teaching on their course
 National Student Survey 2024



“The university has amazing studio space, software and equipment which was hugely beneficial in my area; it was a great choice to study there.”

Amilia Matthews, film and TV graduate

Humanities and social sciences subjects

English		
Creative Writing BA Hons	3 years full-time; 6 years part-time; 4 years sandwich	Greenwich
Creative Writing and English Literature BA Hons	3 years full-time; 6 years part-time; 4 years sandwich	Greenwich
English Language and Literature BA Hons	3 years full-time; 6 years part-time; 4 years sandwich	Greenwich
English Language and TESOL BA Hons	3 years full-time; 6 years part-time; 4 years sandwich	Greenwich
English Literature BA Hons	3 years full-time; 6 years part-time; 4 years sandwich	Greenwich



English
Joint No 1
 London university
 for student satisfaction
 Complete University Guide 2025



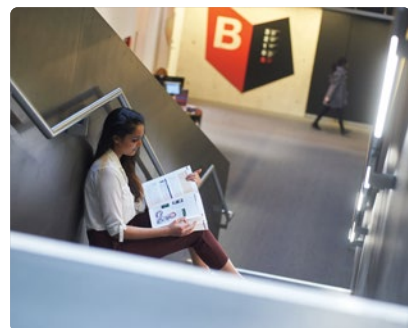
Creative writing
No 3
 London university
 Complete University Guide 2025



Course	Attendance	Campus
History		
History BA Hons	3 years full-time; 6 years part-time; 4 years sandwich	Greenwich
History and Politics BA Hons	3 years full-time; 6 years part-time; 4 years sandwich	Greenwich
International relations		
Languages and International Relations BA Hons	3 years full-time; 6 years part-time; 4 years sandwich	Greenwich
Politics and International Relations BA Hons	3 years full-time; 6 years part-time; 4 years sandwich	Greenwich
Sociology		
Sociology BA Hons	3 years full-time; 6 years part-time; 4 years sandwich	Greenwich
Sociology and Criminology BSc Hons	3 years full-time; 6 years part-time; 4 years sandwich	Greenwich
Sociology and Psychology BSc Hons	3 years full-time; 6 years part-time; 4 years sandwich	Greenwich

Law and criminology subjects

Criminology		
Criminology and Criminal Justice BA Hons	3 years full-time	Greenwich
Criminology and Criminal Psychology BSc Hons	3 years full-time; 6 years part-time	Greenwich
Criminology and Criminal Psychology (Extended) BSc Hons	4 years full-time	Greenwich
Law		
Law LLB Hons	3 years full-time; 4 years part-time	Greenwich
Law (Extended) LLB Hons	4 years full-time	Greenwich
Law in Practice LLB Hons*	3 years full-time; 4 years sandwich; start Sept or Jan	Greenwich
Law Senior Status LLB Hons	2 years full-time	Greenwich
Law with Criminology LLB Hons	3 years full-time	Greenwich
Study Abroad LLB Hons	4 years full-time	Greenwich



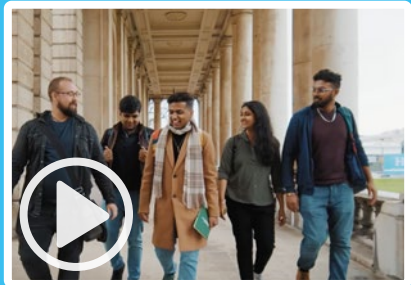
“I found the lecturers to be extremely available and supportive, even after graduation. They truly care about their students’ achievements and wellbeing.”

Gaia Gaddi, criminology graduate



Greenwich Business School

Gain the skills and expertise essential for success in today's business landscape within our global community of staff and students. You'll get a chance to tackle real-world challenges and use business facilities such as our Bloomberg Trading Floor and, on some marketing degrees, our Digital Marketing Suite. We'll help you flourish and foster your growth as an individual and as a team player.



Meet the team

Hear from our staff and students about how we are empowering our students to become future leaders in business.



This is my Greenwich

Follow Joshua around campus to find out what a typical day as a Greenwich Business School student is like.

Take me to
[Greenwich Business School](#)



Course	Attendance	Campus
Accounting and finance		
Accounting and Business Analytics BA Hons	3 years full-time; 6 years part-time; 4 years sandwich	Greenwich
Accounting and Finance BA Hons	3 years full-time; 6 years part-time; 4 years sandwich	Greenwich
Accounting and Finance (Extended) BA Hons	4 years full-time; 5 years sandwich	Greenwich
Accounting and Finance (Direct Entry) BA Hons	Year 2 entry: 2 years full-time; 3 years sandwich Year 3 entry: 1 year full-time	Greenwich
Business Management (Finance) BA Hons	3 years full-time; 4 years sandwich	Greenwich
Business Management (Finance) (Direct Entry) BA Hons	Year 2 entry: 2 years full-time; 3 years sandwich	Greenwich
Business with Accounting (Year 3 Direct Entry) BA Hons	1 year full-time	Greenwich
Business with Finance (Direct Entry) BA Hons	Year 3 entry: 1 year full-time	Greenwich
Finance and Investment Banking BSc Hons	3 years full-time; 6 years part-time; 4 years sandwich	Greenwich
Finance and Investment Banking (Direct Entry) BSc Hons	Year 2 entry: 2 years full-time; 3 years sandwich Year 3 entry: 1 year full-time	Greenwich



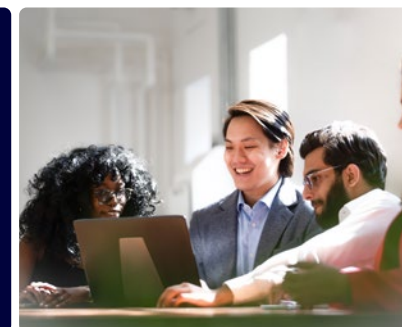
Get tips from
business student
Ifna on securing
a placement

Accounting and Finance
BA Hons

89%

of students responded positively
about the teaching on their course

National Student Survey 2024



Business Economics
BA Hons

88%

of students responded positively
about the teaching on their course

National Student Survey 2024

Business and management		
Business Entrepreneurship and Innovation (Direct Entry) BA Hons	Year 3 entry: 1 year full-time	Greenwich
Business Management BA Hons	3 years full-time; 4 years sandwich; start Sept or Jan	Greenwich
Business Management (Extended) BA Hons	4 years full-time; 5 years sandwich	Greenwich
Business Management (Direct Entry) BA Hons	Please see website for details	Greenwich
Business Studies (Direct Entry) BA Hons	Year 3 entry: 1 year full-time; 2 years part-time	Greenwich
Entrepreneurship and Innovation BA Hons	3 years full-time; 4 years sandwich Year 2 direct entry: 2 years full-time; 3 years sandwich	Greenwich
International Business BA Hons	3 years full-time; 4 years sandwich; start Sept or Jan	Greenwich
International Business with Language BA Hons	3 years full-time; 4 years sandwich	Greenwich

Course	Attendance	Campus
Economics		
Business Economics BA Hons	3 years full-time; 6 years part-time; 4 years sandwich	Greenwich
Economics BSc Hons	3 years full-time; 6 years part-time; 4 years sandwich	Greenwich
Economics (Direct Entry) BSc Hons	Year 2 entry: 2 years full-time; 3 years sandwich Year 3 entry: 1 year full-time	Greenwich
Human resources		
Human Resource Management and Development BA Hons	3 years full-time; 4 years sandwich Year 2 direct entry: 2 years full-time; 3 years sandwich	Greenwich
Human Resource Management (Direct Entry) BA Hons	Year 3 entry: 1 year full-time	Greenwich
Logistics and supply chain management		
Business Logistics and Supply Chain Management BA Hons	3 years full-time; 6 years part-time; 4 years sandwich	Greenwich
Business Logistics and Supply Chain Management (Direct Entry) BA Hons	Year 2 entry: 2 years full-time Year 3 entry: 1 year full-time	Greenwich
Marketing and advertising		
Advertising and Digital Marketing Communications (Direct Entry) BA Hons	Year 3 entry: 1 year full-time	Greenwich
Business Management (Marketing) BA Hons	3 years full-time; 4 years sandwich	Greenwich
Business Management (Marketing) (Direct Entry) BA Hons	Year 2 entry: 2 years full-time; 3 years sandwich	Greenwich
Business with Marketing (Direct Entry) BA Hons	Year 3 entry: 1 year full-time	Greenwich
Digital Marketing and Advertising BA Hons	3 years full-time; 6 years part-time; 4 years sandwich	Greenwich
Digital Marketing and Advertising (Direct Entry) BA Hons	Year 2 entry: 2 years full-time; 4 years part-time; 3 years sandwich Year 3 entry: 1 year full-time	Greenwich
Marketing and Brand Management BA Hons	3 years full-time; 6 years part-time; 4 years sandwich	Greenwich
Tourism, hospitality and events		
Events Management and Innovation BA Hons	3 years full-time; 6 years part-time; 4 years sandwich	Greenwich
Hospitality Management (Direct Entry) BA Hons	Year 3 entry: 1 year full-time	Greenwich
International Tourism and Hospitality Management BA Hons	3 years full-time; 6 years part-time; 4 years sandwich	Greenwich
International Tourism and Hospitality Management (Direct Entry) BA Hons	Year 2 entry: 2 years full-time; 4 years part-time; 3 years sandwich	Greenwich
Tourism Management (Direct Entry) BA Hons	Year 3 entry: 1 year full-time	Greenwich
Tourism Management with Language (Direct Entry) BA Hons	Year 3 entry: 1 year full-time	Greenwich

We may be able to offer direct entry to Year 2 or Year 3 on some courses, in addition to the ones listed here. Turn to page 81 to see how to get in touch and find out more.

Our UK partner colleges

Explore the variety of courses at our partner colleges across London, the South East and South West of England. You'll find everything from higher national certificates (HNCs) and higher national diplomas (HNDs) to foundation and honours degrees.

Bird College

A conservatoire for dance and musical theatre in Sidcup, south-east London, Bird College has an innovative theatre space for performances.

Flourish Learning Trust

From its base in east London, Flourish delivers training opportunities and specialist outreach services to educational professionals across north and east London.

Hadlow College (part of North Kent College)

This college has a rural campus setting where you can study agriculture, horticulture, and the management and handling of animals.

London South East Colleges (LSEC)

There are sites in Bromley, Bexley, Greenwich, Holly Hill and Orpington offering employment-focused courses that blend academic and vocational learning.

MidKent College

This specialised centre in Kent has courses in construction, engineering and building services on a spacious campus that is close to Maidstone town centre.

North East Surrey College of Technology (NESCOT)

This college near Epsom offers specialist courses in teaching and education.

Plumpton College

Located in the South Downs National Park, Plumpton has one of the largest college farms in the UK and offers land and environmental courses.

The Woolwich College

This college in south-east London offers courses in health and social care. It also has strong links with the NHS, local businesses and healthcare providers.

Truro and Penwith College

This college in Truro, Cornwall, offers courses in a range of subjects, such as nursing (including nursing associate), youth studies, science, sport and psychology.



How to apply

Applying as a

home student

- 1 Apply**
Visit the [UCAS website](#) if you want to study with us full-time. For a part-time course, you apply to us direct via our [online application form](#).
- 2 Tell us about yourself**
Get your personal statement ready. The [UCAS how-to guide](#) on writing yours will help you get it spot on. For some courses, we may ask you to attend an interview or audition, or to show us your portfolio. See our [tips on how to prepare](#) for this.

- 3 Get your offers**
If you get an unconditional offer, you can accept your place. If your offer is conditional, you'll need to get specific grades before it becomes unconditional. Once you have your offers, make your firm and insurance choices in your [UCAS Hub account](#).
- 4 Get your results**
Got your grades? Brilliant! We'll email you on what to do next. Missed out on the grades you needed? Although this is bound to be disappointing, don't worry. We may still accept you on your course or offer you an alternative degree through [Clearing](#).
- 5 Join us**
You'll need to register to join us as a student, and our [Welcome Team](#) are here to help you do this quickly and easily.

Get your [application](#) underway

Applying as an

international student

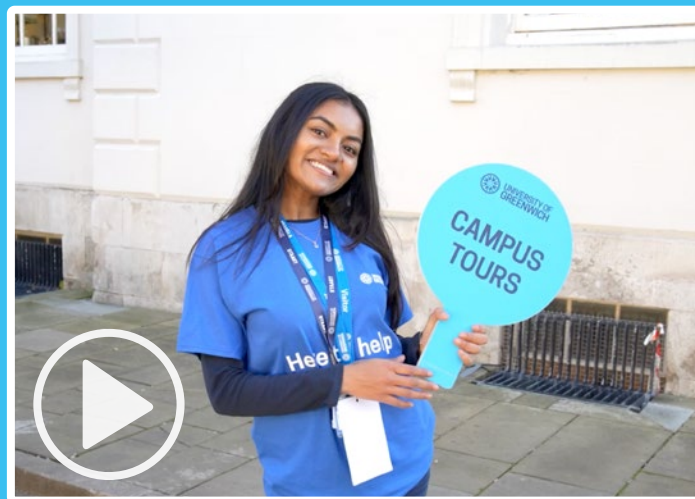
- 1 Visit our website**
A great place to start is the '[Your country](#)' page on our website. Here you'll find the entry requirements for your country and how to contact our local representatives.
- 2 Start your application**
The easiest way to apply is through an authorised in-country representative, which you'll find on the relevant Your country page. You can also apply to us through UCAS. Our international team are here to help you and answer any questions you may have about the university or joining us as a student.
- 3 Receive your offer**
If you meet the entry requirements, we will offer you a place. You can find general entry requirements on the relevant Your country page and specific ones on the course pages. Please send any documentation we have asked for, such as qualifications.
- 4 Accept and confirm your offer**
When you accept your place and pay your pre-registration deposit, you can begin the Confirmation of Acceptance for Study (CAS) process.
- 5 Apply for your student visa**
Once you have your CAS from us, you can apply for your student visa. We have put together a [handy guide](#) to help you do this. Allow plenty of time for your visa application.
- 6 Get ready to join us**
Check you have all the [documentation](#) you need to show when you arrive in the UK and start arranging your travel. We can't wait to welcome you!

Start your [application](#) journey

Open Days

See what university life is all about at an Open Day. You'll get to chat to staff and students, explore our fantastic facilities and join a taster lecture. You can also take a tour of the campus and accommodation. It's worth leaving some time to take a wander and look around the local area.

[Book your place](#)



Come see for yourself

Watch this video to get a taste of what's in store for you at an Open Day.



I loved how we were able to walk around the campus and accommodation to really get a feel of the school and what our days could look like there. I also really enjoyed talking to the students as they gave great advice on personal statements."

Avery Hill Campus Open Day attendee

Can't make it to an Open Day in person? No problem. You can book onto a virtual Open Day and join live webinars. We also have tons of videos of students so you can see what it's like to study with us.

[Discover Greenwich](#)



It was amazing. I can't wait to apply!"

Greenwich Campus Open Day attendee



It was a lovely experience. The staff were so friendly and helpful and nothing seemed too much."

Medway Campus Open Day attendee



Our history, your story...

Ready to make history with us? For over 130 years, we have been helping students explore their talents and achieve their personal and academic goals.

1890

Founded as Woolwich Polytechnic

We started with 504 students and the aim of serving the poorest in the local community. We were located close to the Royal Arsenal, munition factories and workshops.

1935

First sandwich courses in the UK with the Ministry of War

1957

Nobel prize winner Sir Charles Kao (1933–2018) graduates

Known as the 'father of fibre optics', Sir Charles Kao made the internet possible. He studied electrical engineering with us and met his wife while he was here.

1922

Codebreaker Tommy Flowers joins us

The engineering qualification Tommy Flowers gained with us provided the foundation for his success as a World War II codebreaker alongside Alan Turing.

1970

Woolwich merges with other institutions to become Thames Polytechnic

1992

Birth of the University of Greenwich

We gained full university status while staying true to our roots by providing career-focused courses aligned to the needs of employers.

1997

Old Royal Naval College gains UNESCO World Heritage status

2000



Stephen Lawrence Gallery opened

The gallery promotes diversity and was founded after the publication of the Macpherson report into the police handling of the Stephen Lawrence murder investigation.

2008

Malorie Blackman receives OBE

Alumna and author, Malorie Blackman gets an OBE. Children's Laureate from 2013 to 2015, she is an advocate for more diverse literature in schools.

1996



Natural Resources Institute (NRI) joins us

NRI's world-leading research and teaching in food, environment, agriculture and sustainable development transforms lives across the globe.

2022



Almost 27,000 students

132 years on from our humble beginnings, we had 26,611 students in the UK and 13,894 at partner institutions overseas (student enrolments 2021/22).

2012



Thor: The Dark World filming location

Filming of the eighth Marvel movie took place at the Old Royal Naval College. Recent productions filmed here include the TV show 'Bridgerton'.

An important note

This edition of the undergraduate prospectus describes the services and courses that the university intends to offer in the 2026/27 academic year. We make every effort to ensure this information is as accurate as possible at the time of publication. However, this information is subject to change over time and it is important that you check the university's website for the most up-to-date information. In particular, we will make a key update to the website by the end of Clearing 2025 (expected to be in October), which will give a more definitive description of the courses we plan to offer in 2026/27, though some changes may still be made later. Where changes have been made to the information published in this prospectus or online, any significant changes to a course will be notified to any prospective student who has registered an interest in the course and also notified to applicants at the time of making an offer. If you have any comments about the prospectus, please contact us on our [contact form](#) (UK students) and at international@gre.ac.uk (international/EU students) as appropriate. The University of Greenwich will do all that it reasonably can do to provide educational services as described on its website and in this prospectus. Sometimes, circumstances beyond our control mean that we cannot provide such educational services. This might be because of, for example, industrial action by university staff or third parties, the unanticipated departure or absence of key members of university staff, acts of terrorism, the acts of any government or local authority, changes reasonably required by a professional, statutory or regulatory body (PSRB) or accrediting body, epidemic or pandemic of disease, academic changes within subject areas, or where the numbers recruited to a course are so low that it is not possible to deliver an appropriate quality of education for students enrolled on it. In these circumstances, the university

will take all reasonable steps to minimise the resultant disruption to those services, for example by making reasonable modifications, but to the full extent that it is possible in law, the university excludes liability for any loss and/or damage suffered by any applicant. The modifications we make may be to: the content and syllabus of courses, including in relation to placements; the timetable, location and number of classes; the content or method of delivery of programmes of study; the examination process; and the timing and method of assessment. Many of the changes that we make are in response to feedback from students and are intended to improve the experience of students and student outcomes. Where circumstances demand an unavoidable change or where it is necessary for the university to discontinue a programme of study, the university will take reasonable steps to minimise both the changes we make to the programme, and the effect for applicants. All significant changes will be notified promptly as set out above. Our [Student Protection Plan](#) sets out the steps we will take to protect the quality and continuity of study for students. If you have any particular concerns regarding any proposed changes, you should make the university aware as soon as possible by contacting us via our contact form (UK students) or email address (international students) provided above, to discuss your options, which may include choosing a different course, or cancelling/withdrawing your place with us.

You should also be aware that some of the courses listed in the prospectus may be subject to final approval. In the unlikely event that a course is not approved by its start date, the course will not run and you will not be able to take up your place. Should this happen, you will be informed by the university and assistance will be provided to those who have been offered a place to find a suitable alternative course at the university. If a course is awaiting final approval, this will be indicated

clearly in the course listing entry in the prospectus.

The prospectus provides core information on our courses. As a student, you receive further material describing the teaching, examination, assessment and other educational services, and information on the social side of student life at the time that any offer is made to you and subsequently upon enrolment. Your application to the university will be considered in accordance with the university's admissions policy and procedure, which also sets out your right to complain if you are dissatisfied with the handling of your application. Should you go on to enrol as a student of the university, you will be asked to agree to the university's principal conditions of registration and your studies will be undertaken and governed in accordance with the university's student regulations, policies and procedures. Please note that the principal conditions of registration and the student regulations, policies and procedures are updated annually for the start of the academic year. While changes are not usually significant, the current year's versions should be treated as indicative and you should familiarise yourself with the documents applicable to your year of registration when you enrol. A summary of changes to regulations and policies is provided to continuing students at the start of each academic year. If you become a student, this notice shall constitute a term of the contract between you and the University of Greenwich. Any offer of a place is made on the basis that you consent to this notice as part of the contract.

To view the above terms and conditions online, which include links to the current year's admissions policy and procedure, principal conditions of registration and the student regulations, policies and procedures documents, please visit [gre.ac.uk/about-us/governance/legal-information/terms-and-conditions](https://www.gre.ac.uk/about-us/governance/legal-information/terms-and-conditions).

Get in touch

Start your journey with us today! You can reach out to us by phone, through LiveChat, or via our contact form.

UK Student Recruitment team

Tel: 020 8331 9000

Online contact form: [gre.ac.uk/contact/course-enquiry](https://www.gre.ac.uk/contact/course-enquiry)

International/EU students International Office

Tel: +44 20 8331 9000

Email: international@gre.ac.uk



Need to view this document in another format?
Please email content@gre.ac.uk.

University of Greenwich, a charity and company limited by guarantee, registered in England (reg. no. 986729). Registered office: Old Royal Naval College, Park Row, Greenwich, London SE10 9LS

UG20713

**We believe
in education
without
boundaries.**

**Wherever you're
from and whatever
your goals, **your
place is here.** It's
somewhere you
can be yourself
and build the
confidence
to **follow your
dreams.** And you
can count on us
to be **by your side**
from day one.**



**Library wall mural, Stockwell
Street Building, 2024**

Lovingly created by our talented
Greenwich design students